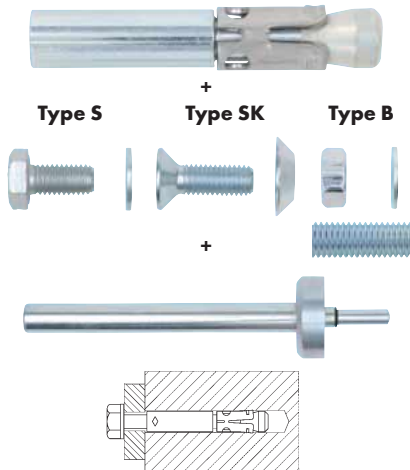


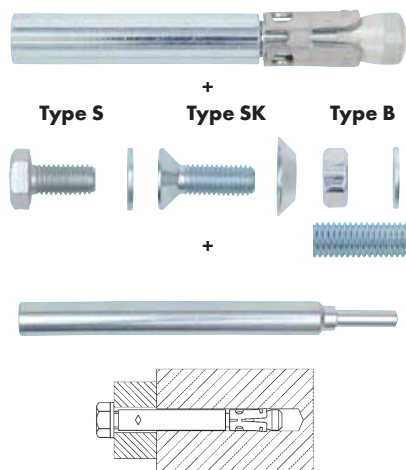
W-FAZ-IG/S FIXING ANCHOR WITH FEMALE THREAD

02.7

Cotter-pin mounting



Through-bolt mounting



Individual fastening:

Cracked and uncracked concrete

W-FAZ-IG/S Type S – galvanized steel (coated hexagon bolt and washer ¹⁾)

W-FAZ-IG/S Type SK – galvanized steel (Countersunk screw and countersunk washer, coated ¹⁾)

W-FAZ-IG/S Type B – galvanized steel (hexagon nut and washer ¹⁾) (threaded rod ²⁾ in accordance with Approval ETA-99/0011)

Setting tool – cotter-pin mounting (the setting tool must leave behind a visible marking on the concrete surface)

Setting tool – through-bolt mounting (The stop of the setting tool must rest on the attached part)

For W-FAZ-IG/A4 fixing anchor, see **02.8**

For W-FAZ-IG/HCR fixing anchor, see **02.8**

Proof of performance

Approvals

European Technical Approval

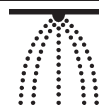
Option 1 for cracked and uncracked concrete



Fire resistance Technical Report TR 020 R30 – R120



M8 - M12



1. Applications

- **Individual fastening:** Normal concrete C20/25 to C50/60 (cracked and uncracked concrete)
- Suitable for fastening metal constructions, metal profiles, brackets, foot plates, supports, cable conduits, pipes, railings, wood structures, beams, stadium seats etc.
- For use in concrete < C20/25 and pressure-resistant natural stone (without approval)
- **W-FAZ-IG/S** may only be used under conditions of **dry interior rooms**

2. Advantages

- High load-bearing capacities, small axial spacings and edge clearances
- Can be loaded immediately – no waiting times
- **The fixing anchor cone with patented plastic coating enables reliable expansion later in cracked concrete**
- **Elegant appearance thanks to countersunk screw for visible fastening with simultaneous high load-bearing capacity (e.g. railings)**
- **Also suitable for temporary fastening (cotter-pin mounting, e.g. stadium seats for flexible use – flush with surface without danger of injury)**

Important information

- Only set the W-FAZ-IG fixing anchor together with the related, approval-compliant setting tools
- According to ETA-99/0011, the anchor system is only approved with the specially coated hexagon bolts, countersunk head screws, washers, countersunk head washers and nuts. These must therefore also be ordered at the same time¹⁾
- Threaded rods ²⁾ may only be used if the conditions specified in the approval ETA-99/0011 (material quality, dimensions, mechanical properties) are met (see product information, Page 3)
- The torque necessary for anchoring can be applied with Würth torque wrenches and suitable attachments (insertion open-end wrench) (Art. No. 0714 71 ...)

3. Properties

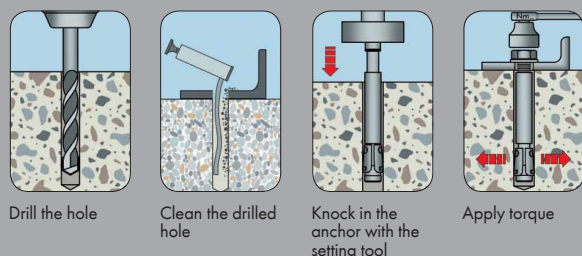
- Torque-controlled spreading anchor, galvanized steel
- Approval: **ETA-99/0011 for individual attachment** Option 1, uncracked and cracked concrete
- Fire resistance: W-FAZ-IG/S R30, R60, R90, R120; Technical Report TR020 (contained in ETA-99/0011)

¹⁾ Please order the bolts and nuts listed separately – they will be delivered with the related washers and countersunk washers.

²⁾ Threaded rods with acceptance test certificate 3.1 as per Approval ETA-99/0011 in acc. with DIN 976-1 – Mechanical properties in acc. with DIN EN ISO 3506-1. Please order separately.

Setting instructions

Cotter-pin mounting



Through-bolt mounting

