

FIXING ANCHOR WITH FEMALE THREAD W-FAZ-IG/A4 – W-FAZ-IG/HCR

02.8

(W-FAZ-IG/HCR – Highly corrosion-resistant steel – available on special order)

Individual fastening:

Cracked and uncracked concrete

W-FAZ-IG/A4 Type S – Stainless steel A4 (coated hexagon bolt and washer ¹⁾)

W-FAZ-IG/A4 Type SK – Stainless steel A4 (countersunk head screw and countersunk head washer, coated ¹⁾)

W-FAZ-IG/A4 Type B – stainless steel A4 (hexagon nut and washer ¹⁾) (threaded rod ²⁾ in accordance with Approval ETA-99/0011)

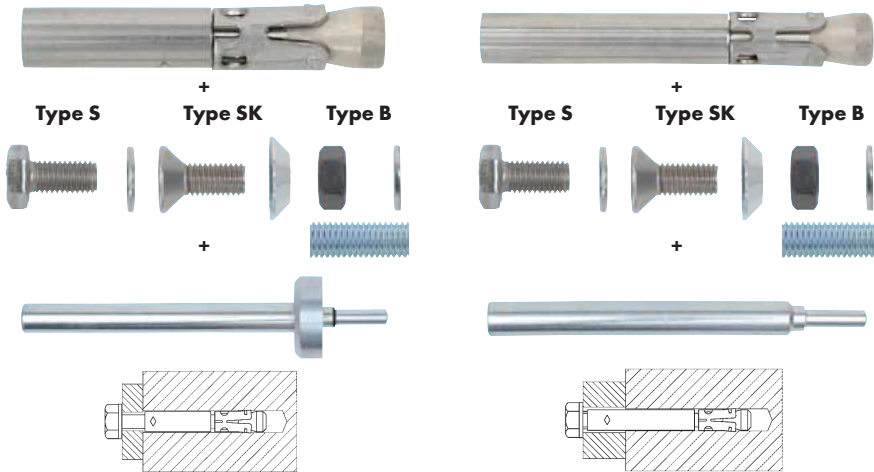
Setting tool – cotter-pin mounting (setting tool must leave behind a visible marking on the concrete surface)

Setting tool – through-bolt mounting (stop of the setting tool must rest on the attached part)





For W-FAZ-IG/S fixing anchor, see **02.7**

Cotter-pin mounting

Through-bolt mounting



Proof of performance

Approvals		Test reports	
European Technical Approval Option 1 for cracked and uncracked concrete 	Fire resistance Technical Report TR 020 R30 – R120 	M8 - M12 	Fire resistance Direct flame effect F30 – F120 (ETK-DIN 4102-2: 1977-09) 

1 Areas of use

- Individual fastening: Normal concrete C20/25 to C50/60 (cracked and uncracked concrete)
- Suitable for fastening metal constructions, metal profiles, brackets, foot plates, supports, cable conduits, pipes, railings, wood structures, beams, stadium, seats etc.
- For use in concrete < C20/25 and pressure-resistant natural stone (without approval).
- **W-FAZ-IG/A4** (stainless steel A4) may be used in **dry interior rooms and outdoors** (including an industrial atmosphere and near the sea) or in **damp rooms**, if no particularly aggressive conditions prevail
- **W-FAZ-IG/HCR** (highly corrosion-resistant steel HCR) may be used in **areas with very high levels of corrosion** (e.g. indoor pool atmosphere, road tunnels, poorly ventilated car parks or parts in seawater and in a marine atmosphere)

2 Advantages

- High loads, small axle bases and edge clearances
- Can be loaded immediately – no waiting times
- **The fixing anchor cone with patented plastic coating enables reliable expansion later in cracked concrete**
- **Elegant appearance thanks to countersunk head screws for visible fastening with simultaneous high load-bearing capacity (e.g. railings)**
- **Also suitable for temporary fastening (cotter-pin mounting, e.g. stadium seats for flexible use – flush with surface without danger of injury)**

Important information

- Only set the W-FAZ-IG fixing anchor together with the related, approval-compliant setting tools
- According to ETA-99/0011, the anchor system is only approved with the specially coated hexagon bolts, countersunk head screws, washers, countersunk head washers and nuts. These must therefore also be ordered at the same time¹⁾
- Threaded rods ²⁾ may only be used if the conditions specified in the approval ETA-99/0011 (material quality, dimensions, mechanical properties) are met (see product information, Page 3)
- The torque necessary for anchoring can be applied with Würth torque wrenches and suitable attachments (insertion open-end wrench) (Art. No. 0714 71 ...)

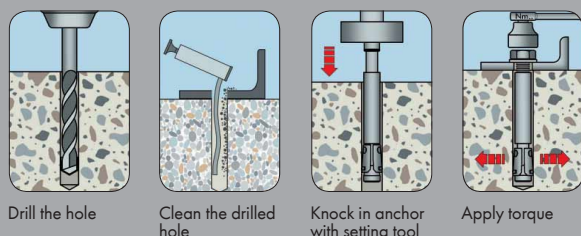
3 Properties

- Torque-controlled expanding anchors made of stainless steel A4 and HCR highly corrosion-resistant steel
- Approval: **ETA-99/0011 for individual attachment**
Option 1, uncracked and cracked concrete
- Fire resistance: W-FAZ-IG/A4 F30, F60, F90, F120 fire load pursuant to DIN 4102-2: 1977-09 (standard temperature time curve)
Fire Resistance: W-FAZ-IG/A4, W-FAZ-IG/HCR R30, R60, R90, R120; Technical Report TR020 (contained in ETA-99/0011)

¹⁾ Please order the bolts and nuts listed separately – they will be delivered with the related washers and countersunk washers.

²⁾ Threaded rods with acceptance test certificate 3.1 as per Approval ETA-99/0011 in acc. with DIN 976-1 – Mechanical properties in acc. with DIN EN ISO 3506-1. Please order separately.

Setting instructions Cotter-pin mounting



Through-bolt mounting

