

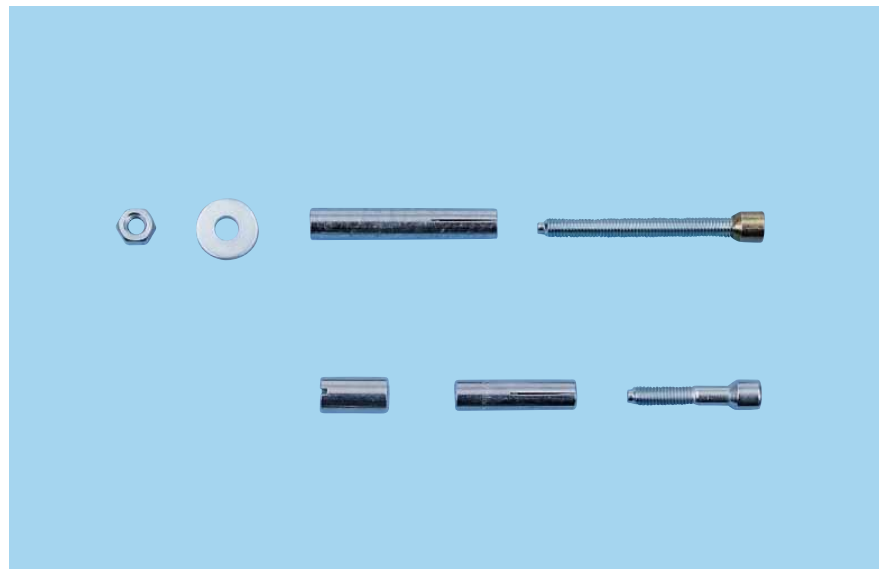
06

W-PA Aerated Concrete Anchor

Type A outside thread*
Galvanized steel

Type i inside thread*
Galvanized steel

Setting tool for manual mounting
(not pictured)



Evidence of performance

General construction permits		
Tensile zone	Pressure zone	Ceiling
cracked aerated concrete	uncracked aerated concrete	suspended ceiling and comparable static attachments
	contained in Z-21.1-1525	contained in Z-21.1-1525

* ORSY

1. Applications

- The heavy-duty anchor for aerated concrete
- Can be used in aerated concrete without reinforcements of strength classes PB2, PB4 and PB6 and with reinforced aerated concrete of strength classes P 3.3 and P 4.4
- Suitable for attaching metal structures, metal profiles, suspended ceilings, sanitation and ventilation lines, foot plates, brackets, railings, lattices, machines, wood structures, beams, purlins, supports etc. (see anchor technology for industries)
- For anchorages under primarily static loads
- Use for components in closed, dry rooms
- Not suitable for rooms subject to moisture with an atmosphere containing chlorine (public pools etc.)

2. Advantages

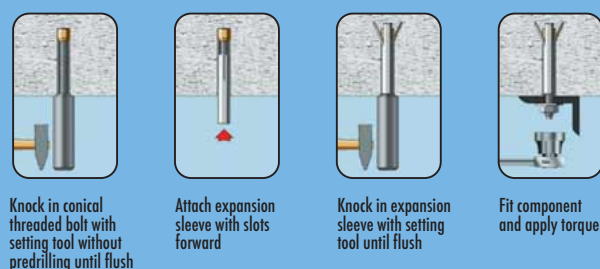
- Can be loaded immediately – no wait time
- High permissible loads for a high degree of safety

- Quick anchor setting – minimal mounting costs
- Mechanical processing also possible with special tool for SDS mount – in this case only impact effect of drill hammer (at least 3 kg) is utilized.

3. Properties

- Approval: **Z-21.1-1525 General construction permission** for – tensile zone (cracked aerated concrete) and pressure zone (uncracked aerated concrete) – light ceiling coverings and joist constructions in accordance with DIN 18168-1:1981-10 in reinforced roof and ceiling boards and for statically comparable fastenings (for max. load, see construction permit)
- The form-fit anchorage is to a large extent expansion-pressure free and is implemented without any costly or elaborate undercut tools
- Can be mounted without using machines
- Fire resistance: F90, F120 (M6 – M12)
- **Note:** The anchoring of the anchors is only permissible in unplastered and uncoated masonry walls

Setting instructions Type A



Setting instructions type i

