

WIT-PM 200

25.2

2-component reaction resin mortar, polyester styrene-free

Individual fastening:

Uncracked concrete, masonry of solid and perforated bricks

WIT-PM 200, coaxial cartridge of 330 ml incl. 1 static mixer

WIT-PM 200, coaxial cartridge of 150 ml incl. 1 static mixer & 1 application gun

for use with normal silicone application gun

WIT-PM 200, tubular-film cartridge of 300 ml incl. 1 static mixer

for use with normal silicone application gun

Masonry



Uncracked concrete



Proof of Performance

Approvals

European Technical Approval

Option 7 for uncracked concrete

European Technical Approval

Solid and perforated stone masonry and aerated concrete (b, c)



1. Applications

- Approved for masonry of: solid brick (CB), solid sand-lime brick (SSLB), vertically perforated brick (VPB) and perforated sand-lime brick (PSLB)
- Approved for uncracked concrete, concrete compression zone (C20/25 to C50/60)
- Also suitable for: hollow blocks made of concrete and lightweight concrete
- Suitable for securing wooden structures, metal structures, metal profiles, brackets, screens, plumbing objects, pipes, cable conduits etc.

2. Advantages

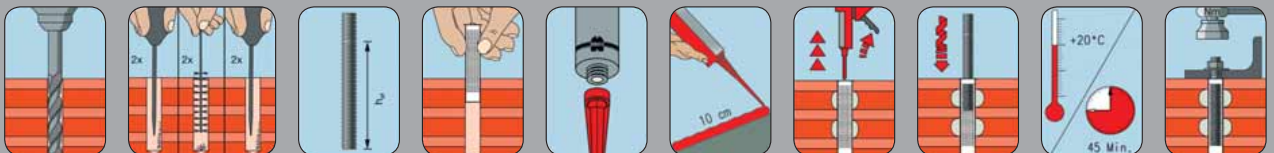
- Styrene-free and thus especially suitable for anchoring in perforated brick masonry
- Cartridges can be used up to expiration of the best before date by replacing the static mixer or by being closed again with sealing cap

3. Features

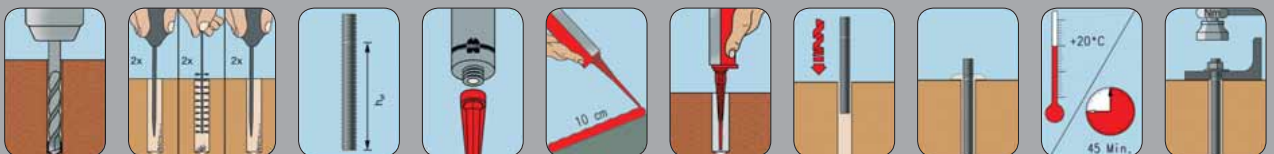
- Uncracked concrete: European Technical Approval ETA-12/0569
- Masonry (solid and perforated brick): European Technical Approval ETA-13/0037
- 2-component reaction resin mortar, polyester styrene-free
- Temperature of anchoring base during processing and hardening: -5°C to $+35^{\circ}\text{C}$
- Ambient temperature after full hardening: -40°C to $+40^{\circ}\text{C}$
- Transport and storage temperature (cartridge): $+5^{\circ}\text{C}$ to $+25^{\circ}\text{C}$
- Shelf life (store in a cool, dry and dark place):
Coaxial cartridge (150 ml, 330 ml): 18 months
Tubular-film cartridge (300 ml): 9 months

Setting instructions

Perforated brick



Solid brick



Concrete

