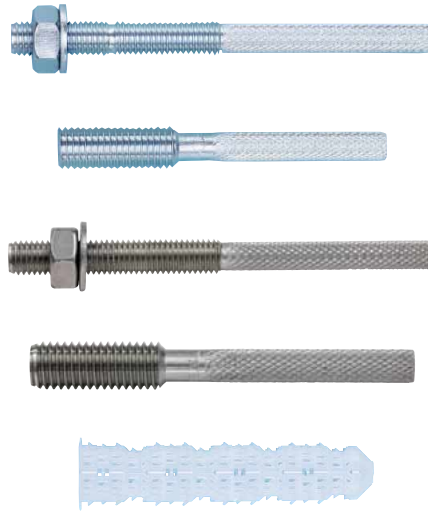


ALL-ROUNDER WIT-VM 250, MASONRY



24.1

2-component reaction resin mortar, Styrene-free vinyl-ester

Individual fastening:

Solid and perforated stone masonry, aerated concrete

WIT-VM 250, coaxial cartridge 330 ml incl. 1 static mixer

WIT-VM 250, tubular-film cartridge 300 ml, incl. 1 static mixer
for use with normal silicone application gun

WIT-AS Anchor Bar

Galvanized steel / A4 / HCR

Internal screw thread sleeve WIT-IG

Galvanized steel / A4 / HCR

Sieve sleeve WIT-SH

Proof of performance

Approvals

European Technical Assessment

Solid and perforated stone masonry (b, c, d)



1. Areas of use

- Approved for masonry of: Solid brick, sand-lime brick, Solid bricks and solid blocks made of normal concrete, Solid bricks and solid blocks made of lightweight concrete, vertically perforated brick, ceiling tiles, perforated sand-lime brick, hollow block made of lightweight concrete, aerated concrete
- Injection mortar WIT-VM 250 can also be used for anchors in the cracked and uncracked concrete, and for subsequently mortared-in reinforcement attachments

- Suitable for securing wooden structures, metal structures, metal profiles, brackets, screens, plumbing objects, pipes, cable conduits etc.

2. Advantages

- Sieve sleeve WIT-SH: The anchor rod is held centrally in the sieve sleeve during installation

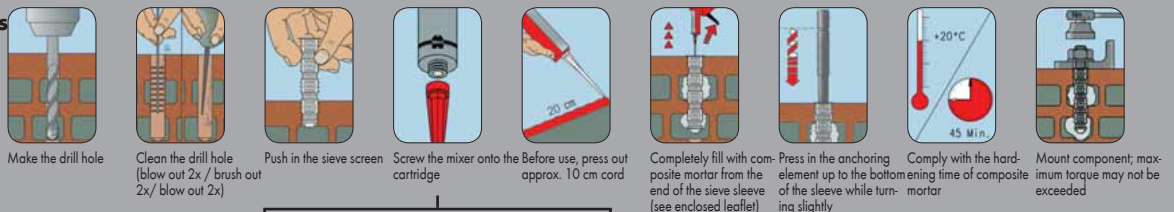
- During installation, the barbs of the sieve screen prevent the sieve screen and anchor rods from falling out (short dimensions) - overhead installation

3. Features

- Masonry (solid and perforated brick, aerated concrete): European Technical Assessment ETA-13/1040
- Cracked and uncracked concrete: European Technical Approval ETA12/0164
- 2-component reaction resin mortar, styrene-free vinyl-ester
- Temperature in the anchoring base during processing and hardening: -10°C to +40°C (aerated concrete from +5°C)
- Ambient temperature after complete hardening -40°C to +80°C
- Transport and storage temperature (cartridge): +5°C to +25°C
- Shelf life (store in a cool, dry and dark place):
Coaxial cartridge (150 ml, 330 ml): 18 months
Tubular-film cartridge (300 ml): 9 months

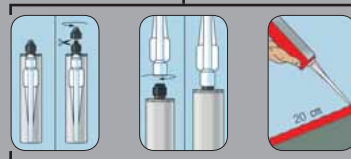
Setting instructions

Perforated brick, aerated concrete anchoring base:



Hose film cartridge, 300 ml:

Cut off hose film clip before use!
Initial mortar material approx. 20 cm



Solid brick anchoring base:

