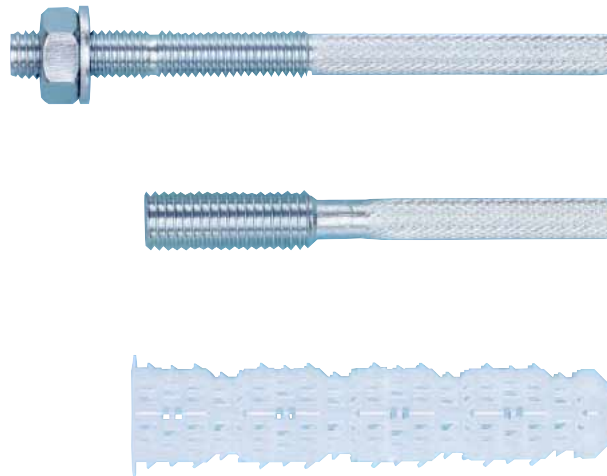


# WIT-VM 200 + SIEVE SLEEVE WIT-SH 18/95



24.2

**Styrene-free 2-component special mortar**

### Individual fastening:

Solid and perforated stone masonry and aerated concrete

**Static Mixture Cartridge, 300 ml, incl. 1 static mixer**

for working with the dispenser gun, Art. No. 0891 003

### WIT-AS Anchor Bar

Galvanized, blue passivated steel

Stainless steel A4

HCR, highly corrosion-resistant steel

Available on special order

### WIT-IG Internal Screw Thread Sleeve

Galvanized, blue passivated steel

Stainless steel A4

HCR, highly corrosion-resistant steel

Available on special order

**Plastic Sieve Sleeve WIT-SH 18/95**

## Proof of performance

Approvals	Test reports
<p><b>Masonry:</b></p> <p><b>Solid and perforated brick, Aerated concrete</b></p>	<p><b>Fire resistance</b></p> <p>Direct flame effect</p>

### Good to know:

• Use rotary drilling for perforated and hollow blocks (without impact mechanism) → higher permissible loads.

- WIT-AS A4 or WIT-IG A4 (stainless steel A4) may be used outdoors (including industrial atmosphere and near the sea) or in damp rooms
- WIT-AS HCR and WIT-IG HCR (highly corrosion-resistant steel HCR) may be used in areas with very high corrosion (e.g. indoor pool atmosphere, street tunnels, poorly ventilated car parks or parts in seawater and in marine atmosphere)
- Suitable for securing facades, projecting roofs, wooden structures, metal structures, metal structures, metal profiles, brackets, railings, screens, plumbing objects, pipes, cable conduits etc.

## 2. Advantages

- Secure anchoring of solid and perforated bricks → high load-bearing capacities
- The anchor may also be anchored in masonry joints
- Aerated concrete: Anchoring in the cylindrical drill hole – no special tools required
- No spreading effect, enabling small edge and axial distances to be complied with
- Cartridges can be used up to expiration of the best before date by replacing the static mixer or by being closed again with the sealing cap

## 1. Applications

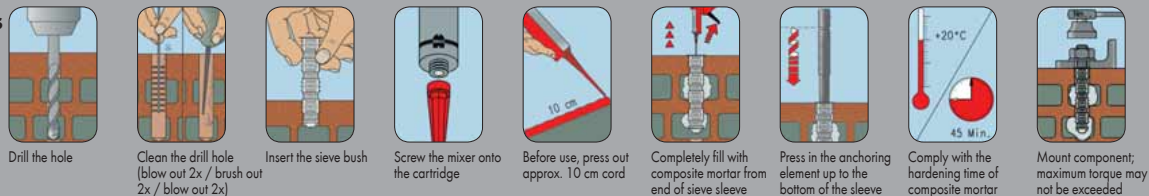
- Can be used for medium loads
- The injection anchor may be anchored in the following anchoring materials with a general construction permit:
  - Solid brick** (≥ MB 12) in acc. with DIN 105
  - Solid sand-lime brick** (≥ CS 12) in acc. with DIN 106
  - Vertically perforated brick** (≥ VPB 4) in acc. with DIN 105
  - Perforated sand-lime brick** (≥ PSLB 4) in acc. with DIN 106
  - Hollow lightweight concrete blocks** (≥ HBLC 2) in acc. with DIN 18153
  - Hollow concrete blocks** (≥ HBC 4) in acc. with DIN 18153
  - Aerated concrete blocks** in acc. with DIN 4165 and **wall elements made of aerated concrete** in acc. with DIN 4223 (cleaning brush Art. No. 0905 499 024 must be used)
- Anchoring in solid bricks (MB and CS) may be carried out with and without sieve sleeve
- Anchoring in perforated bricks (VPB, PSLB, HBLC and HBC) and aerated concrete must be carried out with a sieve sleeve (cleaning brush Art. No. 0905 499 024 must be used)
- WIT-AS and WIT-IG (galvanized steel, blue passivated) may be used in closed rooms, e.g. apartments, offices, schools, hospitals and sales rooms

## 3. Features

- Anchoring through bond and positive locking between injection mortar, sieve sleeve, anchor bar or internal screw thread sleeve and anchoring base
- Galvanized steel, stainless steel A4, highly corrosion-resistant steel HCR: General construction permit Z-21.3-1771
- Dimensioning: See permit Z-21.3-1771
- Fire resistance: F30, F60, F90 and F120 (anchoring base: Solid brick, solid sand-lime brick, vertically perforated brick, perforated sand-lime brick, hollow pumice stone)  
Load in acc. with DIN EN 1363-1-1999-10 (uniform temperature curve)
- Temperature-resistant up to 50°C, briefly up to 80°C
- Application temperature of the mortar: Minimum +5°C
- Transport and storage temperature (cartridge): +5°C to +25°C
- Minimum shelf life when stored properly: 18 months

## Setting instructions

### Anchoring base: Perforated brick, Aerated concrete



### Anchoring base: Solid bricks

