

WIT-VM 200 + SIEVE SLEEVE WIT-SH 12/50

24.1

Styrene-free 2-component special mortar



Individual fastening:

Solid and perforated stone masonry

Static Mixture Cartridge, 300 ml, incl. 1 static mixer

for working with the dispenser gun, Art. No. 0891 003

WIT-AS Anchor Bar

Galvanized, blue passivated steel

Stainless steel A4

HCR, highly corrosion-resistant steel

Available on special order

Plastic Sieve Sleeve WIT-SH 12/50

Proof of performance

Approvals

Masonry:
Solid and perforated brick



Good to know:

- Use rotary drilling for perforated and hollow blocks (without impact mechanism).

- WIT-AS A4 (stainless steel A4) may be used outdoors (including industrial atmosphere and near the sea) or in damp rooms
- WIT-AS HCR (highly corrosion-resistant steel HCR) may be used in areas with very high corrosion loading (e.g. indoor pool atmosphere, street tunnels, poorly ventilated car parks or parts in seawater and in marine atmosphere)
- Suitable for securing metal profiles, brackets, sanitation items, pipes, cable conduits etc.

2. Advantages

- Safe anchoring in solid and perforated bricks
- The anchor may also be anchored in masonry joints
- No spreading effect, enabling small edge and axial distances to be complied with
- Cartridge can be used up to expiration of the best before date by replacing the static mixer or by being closed again with the sealing cap

3. Features

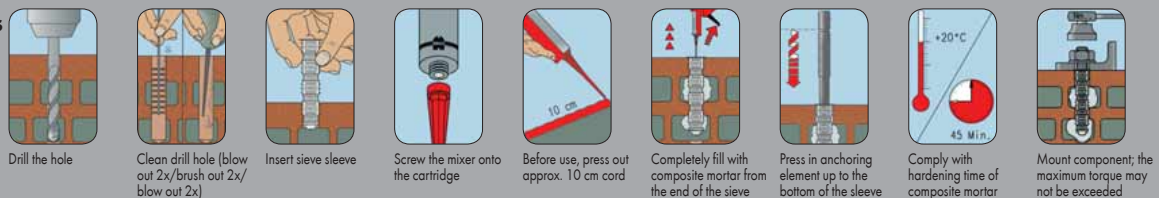
- Anchoring through bond and positive locking between injection mortar, sieve sleeve, anchor bar or internal screw thread sleeve and anchoring base
- Galvanized steel, stainless steel A4, highly corrosion-resistant steel HCR: General construction permit Z-21.3-1771
- Dimensioning: See permit Z-21.3-1771
- Temperature-resistant up to 50°C, briefly up to 80°C
- Application temperature of the mortar: Minimum +5°C
- Transport and storage temperature (cartridge): +5°C to +25°C
- Minimum shelf life when stored properly: 18 months

1. Applications

- Can be used for medium loads
- The injection anchor may be anchored in the following anchoring materials with a general construction permit:
 - Solid brick** (≥ MB 10) in acc. with DIN 105
 - Solid sand-lime brick** (≥ CS 10) in acc. with DIN 106
 - Vertically perforated brick** (≥ VPB 4) in acc. with DIN 105
 - Perforated sand-lime brick** (PSLB ≥ 10) in acc. with DIN 106
- Anchoring in solid bricks (MB and CS) may be carried out with and without sieve sleeve
- Anchoring in perforated bricks (VPB and PSLB) must be carried out with sieve sleeve
- WIT-AS (galvanized steel, blue passivated) may be used in closed rooms, e.g. apartments, offices, schools, hospitals and sales rooms

Setting instructions

Anchoring base: Perforated brick:



Anchoring base: Solid brick:

