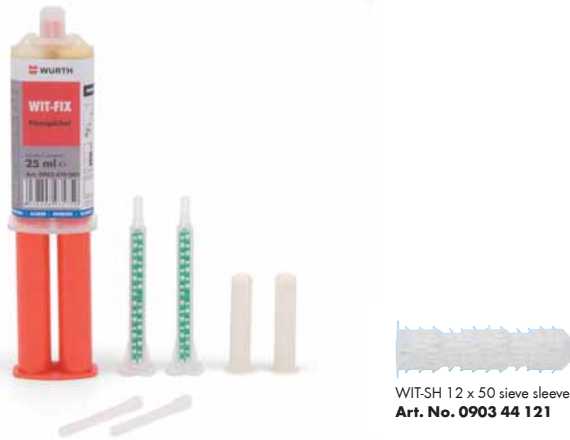


# WIT-FIX

26.1

## Liquid anchor Secondary attachments

**WIT-FIX 25 ml cartridge incl. 2 positive mixers, 2 extensions and 2 sieve sleeves, 10 x 45**



WIT-SH 12 x 50 sieve sleeve  
Art. No. 0903 44 121

### 1. Applications

- WIT-FIX may be used in the following anchoring materials: Concrete, masonry of solid and perforated brick, aerated concrete, sheet materials (gypsum plasterboard, gypsum fiberboard)
- For fastening light components, repairing and filling out drilled holes which have broken out were drilled too large, or as a repair compound for all wooden materials
- Due to its slightly expanding property, an optimum pressing into the application surface is achieved and it can also be used in hollow and perforated materials with a sieve sleeve
- Suitable for fastening towel bars, curtain rails, light shelving, pictures, mirrors and lamps; repair compound for all wood building materials •
- Anchoring in perforated bricks and sheet building materials must be carried out with a sieve sleeve

### 2. Advantages

- Easy, fast application
- Cures quickly, resulting in short waiting times until mounting (3-5 minutes at room temperature)
- WIT-FIX can also be used as a repair compound for all wood materials
- Screws can be screwed directly into the cured compound
- WIT-FIX can be painted over and sanded
- Also suitable for difficult, decayed building materials (renovation work and old buildings)
- Expansion-pressure-free attachment

### 3. Features

- WIT-FIX is a two-component polyurethane injection system
- Cartridge temperature during application must be at least +10°C; +20°C is optimal
- Ambient temperature following curing: -10°C to +40°C
- Transport and storage temperature (cartridge): store in a cool, dry, dark place +10°C to +30°C
- Minimum shelf life when stored properly: 12 months
- Curing time at room temperature: 3-5 minutes

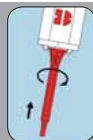
Characteristic values/Anchor dimensions					
<b>WIT-FIX Liquid Anchor</b>	<b>Art. No. 0903 470 001</b> P. Qty. = 1/12	WIT-FIX Cartridge, 25 ml (incl. 2 positive mixer, 2 extensions and 2 sieve sleeves, 10 x 45 <sup>1)</sup> )			
<b>Positive Mixer</b>	<b>Art. No. 0903 470 000</b> P. Qty. = 25				
Solid stone	Drilling dia. [mm]	Drilled hole depth [mm]	Anchoring depth [mm]	Screw dia. [mm]	
	6	50	45	2-4	
	8	50	45	2-5	
	10	50	45	2-6	
Perforated brick (only with sieve sleeve)	Sieve sleeve type	Drilling dia. [mm]	Drilled hole depth [mm]	Anchoring depth [mm]	Screw dia. [mm]
	Sieve sleeve 10 x 45 <sup>1)</sup>	10	50	45	2-6
	WIT-SH 12 x 50 <b>Art. No. 0903 44 121</b>	12	55	50	2-6

<sup>1)</sup> Sieve sleeve 10 x 45 is included with WIT-FIX, Art. No. 0903 470 001

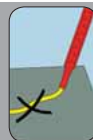
### Setting instructions



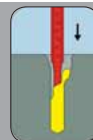
Drill drilled hole and remove sealing cap



Screw mixer and mixing extension onto injection cartridge



Check flow as to whether it has a uniform mixing color



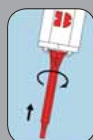
Fill drill hole with material from base up



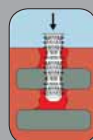
Following the curing time of 3-5 min., the attached part can be fastened with a screw



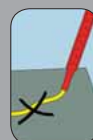
Drill drilled hole and remove sealing cap



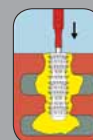
Screw mixer and mixing extension onto injection cartridge



A sieve sleeve must be used with hollow-chamber bricks, perforated bricks or sheet materials



Check flow as to whether it has a uniform mixing color



Completely fill with mortar compound from end of sieve sleeve



Following a curing time of 3-5 min., the attached part can be fastened with a screw