

# W-UR 10 SYMCON® PLASTIC FRAME ANCHOR

42.4



## Multiple attachments of non load-bearing systems:

Concrete, solid and perforated brick, aerated concrete, pre-stressed concrete slabs, weather shells, thin concrete components

### W-UR 10 SymCon

with countersunk screw

Galvanized steel

Stainless steel A4

### W-UR F 10 SymCon

with hexagon screw + pressed-on washer

Galvanized steel

Stainless steel A4

## Proof of performance

### Approvals

#### European Technical Approval

Multiple attachment of non-load-bearing systems in concrete and masonry

#### W-UR (F) 10 SymCon



ETA-11/0309

### Important:

• For anchoring in solid brick and solid sand-lime brick, we recommend that you perform pull-out tests due to the differences in brick manufacturing.

## 1. Applications

- With European Technical Approval, the anchor may be used for multiple attachment of non-load-bearing systems (e.g. facade, suspended ceiling etc.)
- W-UR 10 SymCon and W-UR F 10 SymCon may be anchored in the following anchoring bases:
  - Standard concrete, aerated concrete, weather shells and pre-stressed concrete slabs, masonry walls** (solid brick, solid sand-lime brick, vertically-perforated brick, perforated sand-lime brick, hollow blocks made of lightweight concrete, solid brick and solid blocks made of lightweight concrete, masonry brick made of concrete)
- Suitable for the attachment of facade, ceiling or roof substructures (made of wood or steel), pipelines, cable ducts, wooden beams, wooden laths, brackets, wall-mounted cabinets, shelves etc.

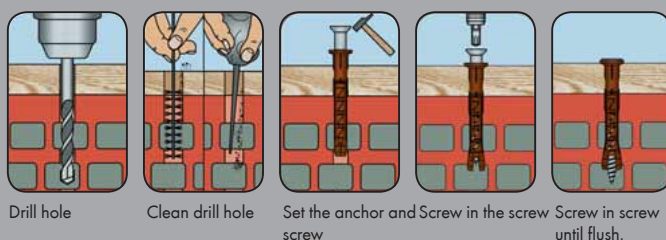
## 2. Advantages

- Low insertion torque of the anchor screw → "Slight" spreading of the anchor, almost no turning of the anchor sleeve.
- **SymCon screw:** The geometry of the anchor screw allows for safe subsequent expansion
- **SymCon screw:** Screwing in the SymCon screw optimally compresses the plastic of the anchor sleeve (nearly no undercutting), thereby increasing load application
- **Universal fRame-fixing anchor** (concrete, perforated- and solid-brick masonry)
- The anchor sleeve and special screw are pre-mounted → Less mounting effort
- Anchor type W-UR F does not require an additional U-washer and prevents contact corrosion
- Concrete anchoring surface: 3 setting depths (40, 50 and 70 mm)  
masonry anchoring surface: 2 setting depths (50 and 70 mm)

## 3. Properties

- W-UR 10 SymCon and W-UR F 10 SymCon: European Technical Approval ETA-11/0309
- The anchor sleeve is made of high-quality polyamide

### Setting instructions I



### Setting instructions II

