

43.1

W-RD Plastic Frame-Fixing Anchor

Secondary attachments:

concrete and masonry of solid and perforated bricks

W-RD 6 with / without collar

W-RD 8 with / without collar

W-RD 10 without collar



ORSY

Proof of Performance

Test Reports

Performance data determined in Würth test laboratory



Good to know:

- Drill perforated and hollow blocks in rotating gear (without impact mechanism).
- Drilling dust is to be removed from the drill hole.
- Screw length = anchor length + 1x screw dia.
- Use wood or particle board screws **WITHOUT** optimized thread tip (drilling tip, counter thread, ring thread, etc.).

1. Applications

- Universal plastic frame-fixing anchor for low and medium load range
- W-RD may be anchored in following anchoring bases: **Standard concrete, masonry walls** (solid bricks, solid sand-lime bricks, vertically perforated bricks, perforated sand-lime bricks, hollow blocks made of lightweight concrete, solid stones and solid blocks of lightweight concrete)
- Installation temperatures:
Temperature in anchoring base: $\geq -20^{\circ}\text{C}$,
Temperature of dowel sleeve: $\geq 0^{\circ}\text{C}$
- Suitable for fastening wardrobes, curtain rails, wall shelves, light hanging cabinets, wall-mounted cabinets, mirrors, picture frames, cable clamps, electrical switches, wash basins, wooden beams, wooden laths, metal rails, angle brackets, profiles, information signs, etc.
- For fastening components in conjunction with a wood or particle board screw without optimized thread tip (e.g.: drilling tip, counter thread, ring thread, etc.)
- Can be used outside or in rooms subject to moisture in conjunction with a stainless-steel screw

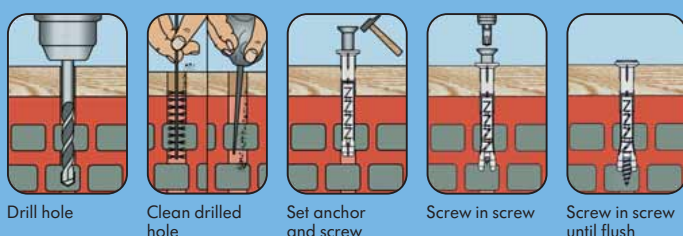
2. Advantages

- Through-bolt mounting
- Can be loaded immediately – no waiting time
- Minimal insertion torque of the screw \rightarrow "slight" spreading of the anchor, almost no turning of the anchor sleeve
- Strong twist lock
- 4x spreading \rightarrow high load-bearing capacity
- Improved power transmission: Even, continuous load distribution across the entire spreading area
- The knock-in lock prevents premature spreading of the anchor during installation

3. Properties

- Anchoring via friction engaging and positive locking (perforated block) between anchor sleeve and anchor surface
- The anchor sleeve is made of high-quality polyamide
- Halogen and silicone-free
- Temperature-neutral from -40°C to $+80^{\circ}\text{C}$

Setting Instructions I



Setting Instructions II

