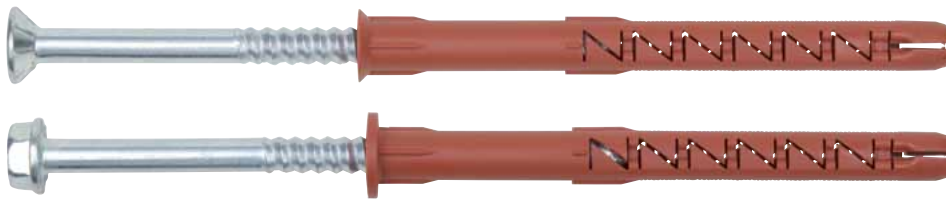


W-UR 14 SYMCON PLASTIC FRAME-FIXING ANCHOR



42.5

Multiple attachment of non load-bearing systems:

Concrete, solid and perforated stone

W-UR 14 SymCon

with countersunk screw

Galvanized steel



W-UR F 14 SymCon

with hexagon screw +

pressed-on washer

Galvanized steel

Proof of performance

Approvals

European Technical Approval

Multiple attachment of non load-bearing systems in concrete and masonry
W-UR (F) 14 SymCon



Good to know:

- For anchoring in solid brick and solid sand-lime brick, we recommend that you perform pull-out tests due to the differences in brick manufacturing.

1. Applications

- With European Technical Approval, the anchor may be used for multiple attachment of non-load-bearing systems (e.g. facade, suspended ceiling etc.)
- W-UR, W-UR F may be anchored in the following anchoring bases: **Normal concrete, masonry walls** (solid brick, solid sand-lime brick, vertically-perforated brick, perforated sand-lime brick, hollow blocks made of lightweight concrete, solid stone and solid blocks made of lightweight concrete, masonry stone made of concrete)
- Suitable for the attachment of facade, ceiling or roof substructures (made of wood or steel), wood beams, wood lath, brackets, wall-mounted cabinets, shelves etc.

2. Advantages

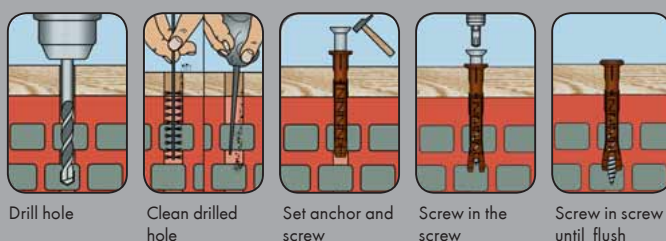
- Minimum insertion torque of the anchor screw → "Slight" spreading of the anchor, almost no turning of the anchor sleeve

- **SymCon screw:** Geometry of anchor screw allows safe subsequent expansion behavior
- **SymCon screw:** When screwing in the SymCon screw, the plastic of the anchor sleeve is optimally compressed (almost no undercut), thus increasing the load introduction
- Universal frame-fixing anchor (concrete, masonry made of perforated and solid stone)
- The anchor sleeve and special screw are pre-mounted → Less mounting effort
- Anchor type W-UR F means an additional washer is not required and prevents contact corrosion.

3. Properties

- W-UR 14 SymCon and W-UR F 14 SymCon (galvanized steel):
European Technical Approval ETA-11/0309
- The anchor sleeve is made of high-quality polyamide

Setting instructions I



Setting instructions II

