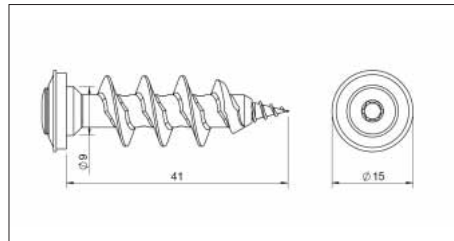


W-ID EASY INSULATING ANCHOR

74.2



The quick, easy and efficient way to attach lightweight loads to heat insulation composite systems



Proof of Performance

1. Application

- For the attachment of cover masking in insulation boards (e.g. outer wall with heat insulation composite system)
- Can be used outdoors and in humid rooms, as screw and washer are A2 stainless steel

2. Advantages

The metal panels can be prepared in a workshop beforehand. This saves time when installing at the construction site. Installation itself can be carried out by just one person!

- No tool changing necessary during installation.
- No pre-drilling in masonry or heat insulation composite system necessary.
- No time-consuming offset installation for lightweight loads necessary.
- No penetration into masonry, thus no heat bridges arise.
- The anchor is processed using through-hole mounting.

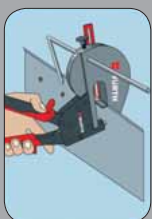
Optional accessories

- Manual hole punch for making round pass-through holes in the sheet metal part to be attached (the holes can also be drilled into the sheet metal)

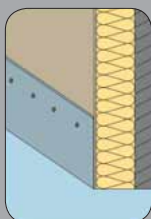
Applications:

For the installation of socket protective covers, sealant strips, plaster strips, plaster profiles, storage strips, metal wall-connection plates, metal wall cladding, cornice covers, ventilation covers, gravel strips, mailboxes, lighting units, house numbers, advertising and company signs, direction signs and insect screens.

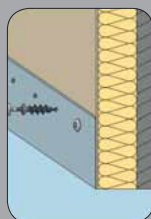
Note on processing



Punch holes.



Set sheet metal in place.



Screw in insulating anchor.