

W-HR HOLLOW-WALL ANCHOR

63.2



Galvanized steel

M 5

M 6

M 8



Proof of performance

1. Areas of Application

- Can be used for hollow-wall attachments with metric screws of sizes M5/M6/M8 in gypsum plasterboards, boards, hard particle boards and hollow-stone ceilings up to a material thickness of 51 mm
- For the mounting of attachment parts, e.g. lamps, rails, switches, shelves, information signs etc.

2. Advantages

- Universal clamping range
- Quick and easy mounting without setting tools
- Can be loaded immediately - no waiting times
- All head shapes of metric screws possible
- Screw can be loosened

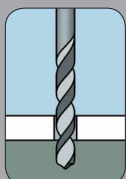
3. Properties

- Galvanized steel
- Great holding power thanks to the large load-support area

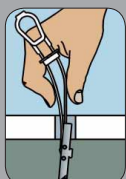
Good to know:

When introducing loads in light partition walls, DIN 18183-1:2009-05 plaster board partition walls and exterior shells with metal structures is to be observed.

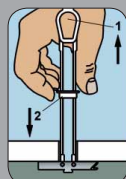
Setting instructions



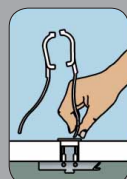
Create drill hole



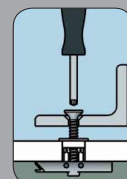
Thread anchor rail through the drill hole



1 Secure anchor with pull tie
2 Push plastic ring to anchoring base



Open pull tie and tear it off



Secure part