

63

Tilting Anchor

Type W-KD

With washer and nut

Type W-KD-TB

With washer, sealing washer made of Hypalon and hexagon nut M10

Type W-KDH

With washer, nut and hook

Type W-KDW

With centering plug, collar sleeve made of polyamide (nylon) and hexagon nut M10



Proof of performance

Certificates

Sprinkler systems

Fixed from M8, Type TB only

VdS

G4890027

1. Applications

- Type W-KD-TB: The anchor for attaching pipes up to DN 50 pursuant to VdS regulations. Threaded rod secured against unintentional unscrewing. For installing sprinkler pipes, holding beams, ventilation ducts, suspended mounting, electricity and illumination rails
- Type W-KDW: For the attachment of wash stands, hanging toilets, boilers, support structures etc. to hollow walls, supply shafts. The centering plug is used to fill up the drill hole and to center the threaded rod
- Types W-KD and W-KDH: For attachments to hollow walls, hollow ceilings, suspended ceilings and various sandwich elements
- Maximum point load on trapezoidal sheeting ceilings for pipes = 0.8 kN / other attachments = 1.0 kN

2. Advantages

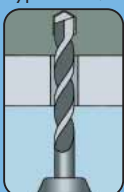
- The tilting peg locks itself in the attachment surface
- Type W-KDW: With large contact surface for soft construction materials
- Each point of attachment can be adjusted individually thanks to the rotatable threaded rod, e.g. inclined mounting possible
- Type W-KDW mini: With large contact surface for soft construction materials, even with a minimal cavity depth of just 90 mm

3. Properties

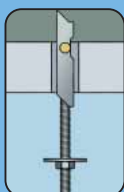
- Steel, galv.
- Fully premounted

Setting instructions

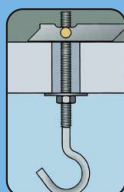
Type W-KD/...



Drill hole

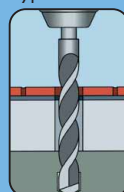


Insert peg until element tilts

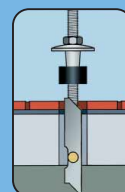


Secure hook with nut

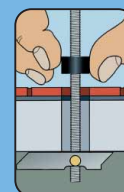
Type W-KDW



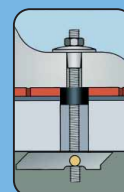
Drill hole



Insert peg until element tilts



Attach centering plug



Mount component