

34.2

W-SD Nail Anchor

Inner and outer thread

Multiple attachment of non-load-bearing systems:
cracked and uncracked concrete

W-SD
with connecting thread M6 and M8
galvanized steel

W-SD-IG
with inner thread M8, M10, M12
Galvanized steel

SDS collared bit



Evidence of performance

Approvals	
M6, M6L, M8	M6L, M 8
European Technical Approval	Fire Resistance
Multiple attachment of non load-bearing systems in concrete	Technical Report TR 020 R30-R120

1. Applications

- Can be used for multiple attachment of non-load-bearing systems in concrete, anchoring of light ceiling coverings and subceilings
- **Multiple attachment of non-load-bearing systems:** Anchorage with European Technical Approval in cracked concrete (concrete tensile zone) and in uncracked concrete (concrete pressure zone)
- With European Technical Approval, the anchor can be used in reinforced or non-reinforced standard concrete of a strength class of at least C20/25 and at most C50/60 in accordance with EN 206:2000-12.
- The anchor may be used in anchorages primarily subject to resting or quasi-resting loads.
- W-SD (galvanized steel) can be used in dry interior rooms
- Suited for the attachment of ceiling structures with threaded rods, suspension of threaded rods, cable and pipe clamps, cable and ventilation ducts, and so on.

2. Advantages

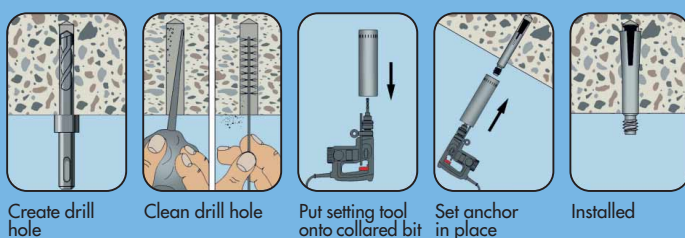
- Low borehole depth
- Small borehole diameter
- Low minimum component thickness ($h_{min} = 80$ mm)
- Can be loaded immediately – no waiting times
- Easy setting
- Collared bits must be used. → The anchors and collared bits form a precisely coordinated system. This system unit does not allow mounting errors and guarantees proper attachment.
- No mounting torque required

3. Properties

- Anchoring through friction engaging – distance-controlled spreading anchor
- Approval: **Multiple attachment of non-load-bearing systems in concrete:** European Technical Approval ETA-07/0138
- Dimensioned in accordance with the "Guideline for European Technical Approval (ETAG) of Metal Anchors for Use in Concrete", Appendix C, Dimensioning Method A
- Fire resistance (anchoring base: concrete C20/25 through C50/60): **R30, R60, R90, R120** (W-SD M6L, W-SD M8): Technical Report TR 020 "Evaluation of Anchorage in Concrete with Regard to Fire Resistance" (contained in ETA-07/0138)

Setting instructions

Outside thread



Inner thread

