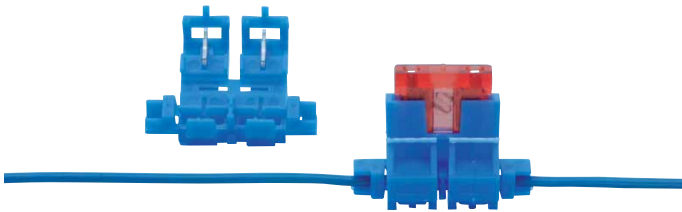


FUSE HOLDER

Appearance					
Version	Mini	ATO	ATO	ATO	ATO
Splash-water protected	x	x	x	-	-
Self extinguishing	x	x	x	x	x
cable dia.	3.3 mm ²	1.3 mm ²	3.3 mm ²	1.3 mm ²	3.3 mm ²
max. Amps	30	20	30	20	30
Cable length approx. cm	10	10	10	10	10
Art. No.	0555 400 01	0555 976	0555 974	0555 400 1	0555 400 2
P. Qty.	10	10	10	10	10

BLADE FUSE HOLDER ATO



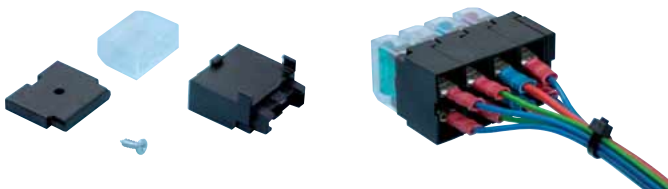
For direct cable clamping.

for cables mm ²	Amps	Art. No.	P.Qty.
0.75 - 2.0	Max. 20	0555 972	25

Storable in ORSY®

* These specified amperages are guidelines for using our fuses **Art. Pre-No. 0731** and in particular depending on the fuse manufacturer used, the temperature, installation location etc.

BLADE FUSE HOLDER ATO



Housing with wall bracket

- Modular

for push-on receptacles mm	Amps	Art. No.	P.Qty.
6.3 x 0.8	Max. 30	0555 973	25

Storable in ORSY®