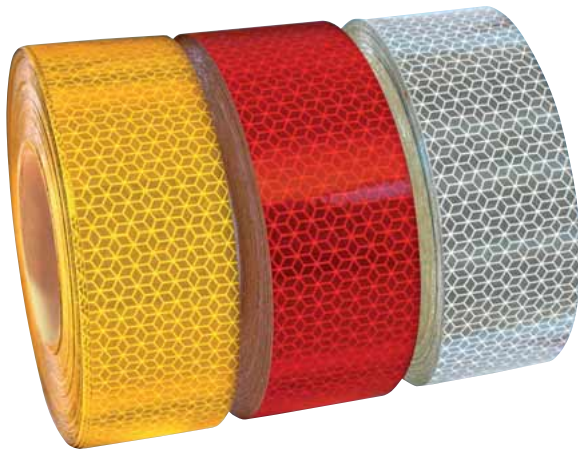


RETRO-REFLECTIVE WARNING MARKING



conforming to ECE 104

- With ECE certification, can be used without special approval
- Film: Type III (retro-reflective).
- Very thin single-layer film:
 - No damaging by water, gasoline or high-pressure cleaning.
 - Can easily be adhered around corners.
 - No separate sealing of edges necessary.
- Can be used on fixed surfaces and tarps.
- All films are self-adhesive.



Applications for retro-reflective markings conforming to ECE 104	Attachment to new vehicles to be approved compulsory *	Fitting to existing vehicles is allowed	Fitting to existing vehicles is not allowed
Vehicles for passenger transport (M)			
M1 - Car seating a maximum of 9 persons			•
M2 - Car seating more than 9 persons M3	•	•	
Vehicles for goods transport (N)			
N1 / N2 - Utility vehicles with a max. weight up to 7.5 t		•	
N3 / N4 - Utility vehicles with a max. weight from 7.5 t	•	•	
Trailers and semi-trailers (O)			
O1 - Trailer with maximum weight up to 0.75 t			•
O2 - Trailers with a max. weight from 0.75 t to 3.5 t		•	
O3 - Trailers with a max. weight from 3.5 t to 10 t	•	•	
O4 - Trailers with a max. weight over 10 t	•	•	

* as of 10.10.2007

Line marking

pursuant to Section 51 a (4) of the German Road Traffic Licensing Regulations (StVZO) in conj. with Section 49 a (7) of the German Road Traffic Licensing Regulations (StVZO) in conj. with the Annex to Section 53 (10) of the German Road Traffic Licensing Regulations (StVZO) Clause 1 No. 3 and Clause 2

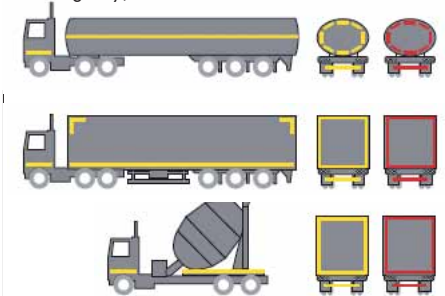
Permissible colors: yellow, white, red (for rear marking only).



Contour marking

Pursuant to Section 53 (10) of the German Road Traffic Licensing Regulations, Clause 1, No. 3 and Clause 2 in conjunction with Section 49 a (7) of the German Road Traffic Licensing Regulations.

Permissible colors: yellow, white, red (for rear marking only).



Color	Application	Strip width	Roll length	Art. No.	P. Qty.	
yellow	Fixed surfaces	50 mm	50 m	0812 44 71	1	
white				0812 44 75		
red				0812 44 73		
yellow	Fixed surfaces - Truck rear set		12.5 m	0812 44 710		
white				0812 44 750		
red				0812 44 730		
yellow	Fixed surfaces - Tank rear set			60 stickers, each 16 cm long		0812 44 711
white						0812 44 751
red						0812 44 731
yellow	Tarps		50 m	0812 44 720		
white				0812 44 760		
red				0812 44 740		

*Sticker spacing on the vehicle should be max. 8 cm