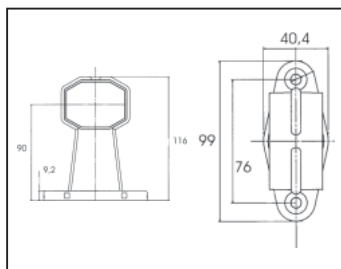
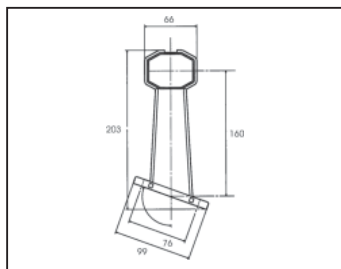
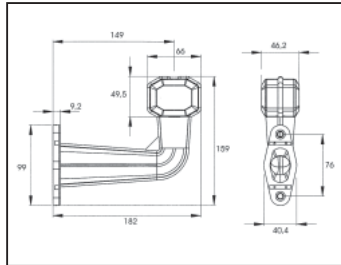


Clearance, Tail and Position Lamps Light-Bulb Version



Clearance Lamp for Light Bulbs universal ADR-tested

- Protection type IP68 (water-tight).
- Dual chamber system (dual protection for light bulb).
If the lens unit is damaged, no moisture penetrates into the contact area.
- Lens units welded with ultrasound.
- Light exit: red/white
- Incl. 24 V light bulb.
- Flexible lamp arm of temperature-resistant rubber material.
- Mounting hole spacing compatible to all common types
→ no drilling!
- **Connection:** Bayonet catch with 0.5 m connection cable.

Accessories

Designation	Art. No.	P. Qty.
Replacement red/white lens unit	0812 42 23	4
Replacement holder with bayonet catch, 0.5 m cable and light bulb	0812 42 101	
T4W Replacement light bulb, 24 V (HD)	0720 150 21	10
T4W Replacement light bulb, 12 V (daylight)	0720 150 116	

Can be used for vehicle electrical systems with voltage:	Version	Connection	Comparison number	Art. No.	P. Qty.
12 V/24 V	① 90° lamp arm	with 0.5 m cable	–	0812 42 20	2
12 V/24 V	② 60° lamp arm	with 0.5 m cable	–	0812 42 30	
12 V/24 V	③ short lamp arm	with 0.5 m cable	–	0812 42 40	



TIP:

LED Lens Unit Art. No. 0812 42 31 fits in this light bulb version.