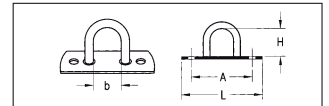



Belt clasp


● All clasps have a hole diameter of 5 mm.

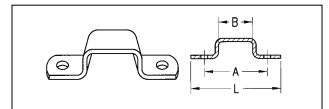
for round eyes 36 mm dia., 40 mm dia. and oval eyes 42 x 22 mm




	Model	Material	Dimensions					Art. No.	P. Qty.
			H in mm	b in mm	L in mm	B in mm	A in mm		
	Small version	Galvanised steel	15	16	49	15	34	0880 883	50

for round eyes 40 mm dia. and oval eyes 42 x 22 mm

	Material	Dimensions					Art. No.	P. Qty.
		H in mm	b in mm	L in mm	B in mm	A in mm		
	Galvanised steel	16	26	66	15	51	0880 881	50
		20	26	66	15	51	0880 885	
		25	26	66	15	51	0880 884	
		30	26	66	15	51	0880 880	



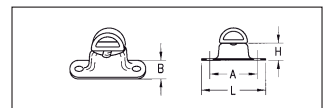
Door holding clasps

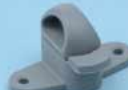
	Model	Material	Dimensions					Art. No.	P. Qty.
			H in mm	b in mm	L in mm	B in mm	A in mm		
	Malleable cast iron	Steel	16	-	69	40	53	0880 160 001	25

Locks

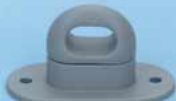
Turn-lock fasteners

for round eyes 40 mm dia. and oval eyes 42 x 22 mm




	Model	Material	Dimensions				Art. No.	P. Qty.
			H in mm	L in mm	B in mm	A in mm		
	DUO	Polyamide, grey	11	65	23	51	0880 905 000	25


for oval eyes 42 x 22 mm

	Model	Material	Dimensions				Art. No.	P. Qty.
			H in mm	L in mm	B in mm	A in mm		
	Extra strong version	Polyamide, grey	13	70	34	53	0880 160 002	25

for oval eyes 22.5 x 13.5 mm

	Model	Material	Dimensions				Art. No.	P. Qty.
			H in mm	L in mm	B in mm	A in mm		
	Rigid hoop	Brass	11	41	12.5	30.5	0880 244 12	25

for oval eyes 17 x 11 mm

	Model	Material	Dimensions				Art. No.	P. Qty.
			H in mm	L in mm	B in mm	A in mm		
	Rigid hoop	Brass	11	35	13	23.5	0880 243 8	25