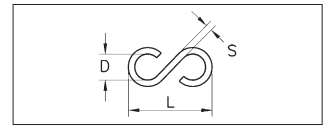


## HOOKS



### S-hooks

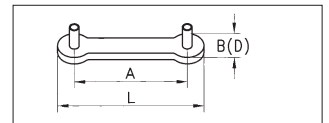
	Version	Dimensions			Art. No.	P. Qty.
		L in mm	S in mm	D in mm		
	Galvanized iron	30	3.0	9	<b>0880 45 1</b>	25
		40	3.8	11	<b>0880 45 2</b>	
		45	4.2	14	<b>0880 45 3</b>	
		60	5.8	18	<b>0880 45 3</b>	

can be stored in ORSY®

### Locking chains

	Version	Dimensions			Art. No.	P. Qty.
		Chain length in mm	S-hook dia. in mm	Fastening plate Length in mm		
	* with closed S-hook	130	36.5	10.8	<b>0880 13</b>	10
	with S-hook and fastening plate	150	36.5	34	<b>0880 15</b>	
		180	38	34	<b>0880 18</b>	
		200			<b>0880 20</b>	
		300			<b>0880 30</b>	

## RIVETS AND ACCESSORIES



### Rivet washers

	Version	Material	Dimensions				Art. No.	P. Qty.
			A in mm	L in mm	B (D) in mm	Hole dia. in mm		
	Rivet washer	High-pressure polyethylene gray	-	-	17.5	4	<b>0880 418 ①</b>	100
			20	36	20	-	<b>0880 204 020 ②</b>	25
			25	42	20	-	<b>0880 204 325 ③</b>	
			51	68	18	-	<b>0880 207 050 ④</b>	
	Rivet washer self-perforating, with rivets	Plastic white	20	36	16	12	<b>0880 160 010</b>	100

### Rivets

	Version	Material	Dimensions			Art. No.	P. Qty.
			L in mm	D in mm	Head dia. in mm		
	Hollow rivet Double calotte *	Galvanized iron	9	3	10	<b>0880 486</b>	100
			12	3.5	13	<b>0880 483</b>	
			15			<b>0880 490</b>	
	Aluminum solid rivet for inch fittings DIN 674	Aluminum	12	5	9	<b>0880 512</b>	
			15			<b>0880 515</b>	
			30			<b>0880 530</b>	
	Aluminum straight belt rivet DIN 675	Aluminum	12	4	11	<b>0880 412</b>	
			15			<b>0880 415</b>	

\* The material to be riveted should be 3 - 5 mm thinner than the length of the hollow rivet.