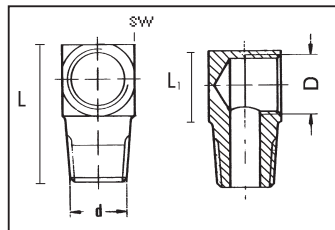


Connection fittings for poorly-accessible lubrication and manifold points

- For central low-viscosity grease lubrication units: Lines with a diameter of 4 mm are connected to connection pieces with tapered rings and union bolts M8x1.
- With central grease lubrication units: Lines with a diameter of 6 mm are connected to connection pieces with double-tapered rings and union bolts M10x1.

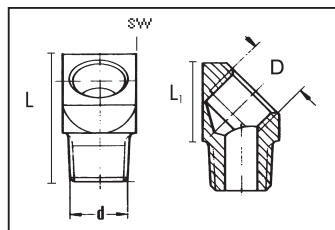
Connection pieces

- For the connection of a line to a lubrication or divider manifold point if an insertable or cutting-ring fitting cannot be screwed in directly.
- Material: steel.
- Galvanized surface.



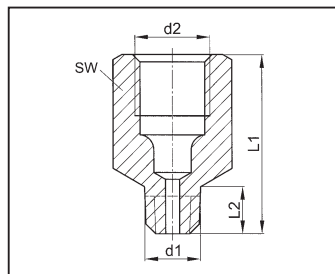
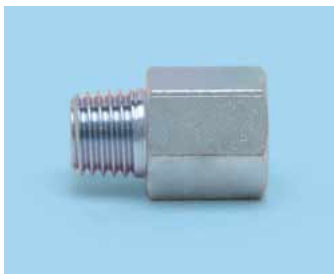
90° Angled Piece

D	d	Size	L	L1	Art. No.	P. Qty.
M8x1	M8x1 tap.	13	23 mm	13 mm	0884 600 105	10
M10x1	M10x1 tap.	13	23 mm	13 mm	0884 600 106	



45° Angled Piece

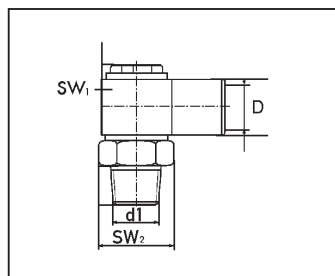
D	d	Size	L	L1	Art. No.	P. Qty.
M8x1	M8x1 tap.	13	23 mm	13 mm	0884 600 102	10
M10x1	M10x1 tap.	13	23 mm	13 mm	0884 600 103	



Straight Connection Piece

- For extension when the lubrication or support point is recessed.

d2	d1	Size	L1	L2	Art. No.	P. Qty.
M8x1	M6x1 tap.	11	18 mm	8 mm	0884 600 120	10
M8x1	M8x1 tap.	11	18 mm	8 mm	0884 600 130	
M8x1	M10x1 tap.	11	18 mm	8 mm	0884 600 140	
M10x1	M10x1 tap.	13	18 mm	7 mm	0884 600 142	
M10x1	M10x1 tap.	13	23 mm	12 mm	0884 600 141	
M10x1	M10x1 tap.	13	35 mm	24 mm	0884 600 145	
M10x1	M10x1 tap.	13	40 mm	29 mm	0884 600 143	
M10x1	M10x1 tap.	13	50 mm	39 mm	0884 600 146	
R 1/8"	R 1/8" tap	13	23 mm	12 mm	0884 600 148	



Freely-Rotatable Joint

- For the connection of a line to a movable lubrication or divider manifold point (subject to slow rotation).
- Material: brass.

D	d1	Size 1	Size 2	Art. No.	P. Qty.
M8x1	M8x1 tap.	15	14	0884 600 110	5
M8x1	M10x1 tap.	15	14	0884 600 111	