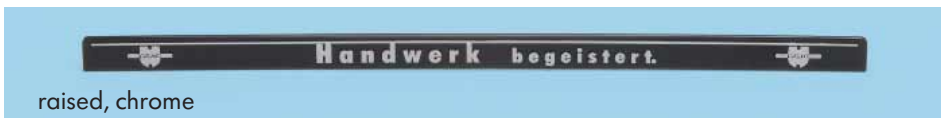


one-color



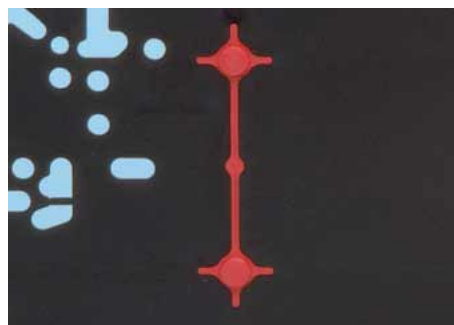
two-color



raised, chrome



Twin-Fixx base plate, front view



Twin-Fixx base plate, rear view

Version		Art. No. Twin-Fixx, complete	Art. No. Strip	Art. No. Base plate	Minimum quantity
Twin-Fixx 520 mm	blank	0824 001	0824 010 100	0824 010 0	50
	silver negative	0824 011 01	0824 010 201		100
	silver positive	0824 011 03	0824 010 301		
	one-color	0824 011	0824 010 101		
	two-color	0824 012	0824 010 102		
	three-color	0824 013	0824 010 103		
	four-color	0824 014	0824 010 104		
	raised, white	0824 021 01	0824 020 100		
	raised, chrome	0824 021 02	0824 020 200		

Note the following for new and subsequent orders:

Designation	Art. No.	P. Qty.
Tool Expenses**	0824 099 5	1
Film-Change Expenses	0824 099 7	
Silkscreen Device per color	0824 099 8	
Film-Creation Expenses*	0824 099 9	

* for new orders

** for new/change raised orders only

Twin-Fixx Quick-Action License Plate Holder

Printed in several colors or with raised printing.

▶ Four red rubber inserts.

Your advantage:

Rattling noises and damage to the vehicle are continuously avoided, as both the inserted license plate and the Twin-Fixx are dampened from the vehicle body.

▶ High-quality system with flexible swappable strip.

Your advantage:

Especially harmonized and attractive design pursuant to EU Directive (EEC 74/483). Also fits round vehicle contours.

▶ Rugged design.

Your advantage:

Continual advertisement thanks to high stability and long service life.

▶ Large printing area.

Your advantage:

Ideal opportunities for optimum advertising.

▶ Also available as a "starter kit".

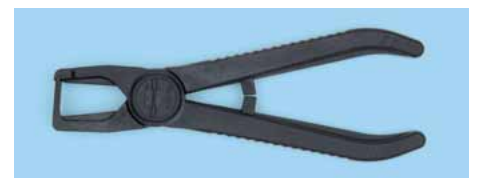
Your advantage:

100 pieces, printed in one color incl. film creation, silkscreen printing and pliers at an especially attractive price.

Art. No. 0824 964 0

Special Pliers

Plastics design



Art. No. 0826 715 1

P. Qty. 1