

# SPEED DIAMOND CUTTING DISK FOR WET CUTTING

## Tiles



### Properties:

- Versatility: ●●●○
- Service life: ●●●○
- Cutting speed: ●●●●
- Cutting quality: ●●●○

**Premium diamond cutting disk with very narrow cutting surface and closed edge for quick and clean cutting. For material thicknesses up to approx. 20 mm.**

### Extremely fine, precise cutting

Thanks to segment mixture of fine-grit diamonds in a special binding agent.

### Improved cutting behavior

Specially shaped expansion slot with room to expand, yet minimal interruption of base blade.

### Protects the table saw motor

Thanks to less resistance in the material as a result of the extremely thin segment.

### Reduced tendency to flutter

The wheel is also stabilized through targeted reinforcement around the flange.

### Flexible use on machines with 25.4 and 30 mm mounts

A reducing ring pressed in at the factory can simply be removed if necessary to widen the mounting hole to 30 mm.

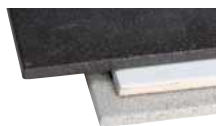
Dia. in mm	Hole in mm	Segment height in mm	Segment thickness in mm	Segment connection	Max. rpm	Art. No.	P.Qty.
180*	30/25.4**	9	1.4	Sintered	8,500	<b>5526 870 183</b>	1
200*					7,650	<b>5526 870 203</b>	
230*					6,600	<b>5526 870 233</b>	
250*					6,150	<b>5526 870 253</b>	
300*		9.5	5,100		<b>5526 870 303</b>		
350*			4,400		<b>5526 870 353</b>		

\*Max. circumferential speed: 80 m/s

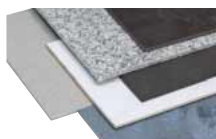
\*\*With pressed-in reducing ring from 30 to 25.4 mm

### Field of application:

Specially developed for tiles, fine stoneware and comparable materials. For wet cutting with stationary saws and table saws.



Tiles



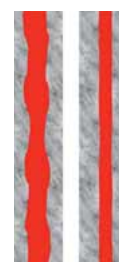
Fine stoneware



Hard/soft clinker



Granite/Marble



Cut comparison:

- 1 Conventional segment mixture
- 2 ZEBRA segment mixture

1 2