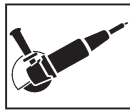


# Longlife & Speed Diamond Cutoff Wheels

Angle grinders

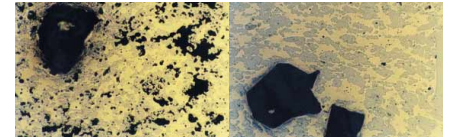


## LONGLIFE & SPEED Diamond Cutoff Wheel Yellow for construction sites

- ▶ **Diamond cutoff wheel developed especially for construction site and rescue use.**
- ▶ For dry and wet cutting.
- ▶ **Patented production process.**
  - Optimised HPS (high-pressure sinter method) technology:
    - Dense bonding structure.
    - Diamonds are optimally embedded.
    - Hardened steel core.
    - High segment adhesive strength.
- ▶ Newly developed segment and main blade shape.
  - Specially treated main blade for absolutely smooth running.
  - Innovative slot geometry prevents cracking.
  - Tapered segments reduce friction.
    - Considerably reduced heat development.

**Your advantages:**

- Optimum cooling and dust removal.
- No wheel overheating.
- No wheel wobble or flutter.
- Clean cut edges, straight cuts.
- Up to 100% longer service life compared to a comparable wheel.



The diamond grit (large dark elements) is homogeneously embedded with HPS technology (on right). Cutoff wheels without HPS show high porosity (small dark points – on left) and lead to premature diamond break-out.

- Enormous ease of cutting.
  - Saves time.
- Very high safety reserves.
- Best cutting properties on ferrous metals and stainless steel.
  - Caution: Not a replacement for ordinary cutoff wheels.
  - Not for continuous use!
- Broad range of uses (concrete, granite, construction materials).
  - No complex wheel changes at the construction site.
- The ideal wheel for rescue work (fire brigades etc.), e.g. cutting through crash barriers.

Dia. (mm)	Hole (mm)	Segment hgt. (mm)	Segment thkn. (mm)	No. of segments	Segment connection	Max. rpm	Art. No.	P. Qty.
115*	22.23	7	2.2	12	HDS	13,300	<b>0666 760 115</b>	1
125*		7	2.2	12		12,200	<b>0666 760 125</b>	
230*		9	2.6	30		6,600	<b>0666 760 230</b>	

\* Max. circumferential speed 80 m/s.

Hand-held and pavement saws



Dia. (mm)	Hole (mm)	Segment hgt. (mm)	Segment thkn. (mm)	No. of segments	Segment connection	Max. rpm	Art. No.	P. Qty.
300*	20.0	9	2.6	28	Laser	6,400	<b>0666 760 300</b>	1
300*	25.4**	9	2.6	28		6,400	<b>0666 760 301</b>	
350*	20.0	9	3.0	34		5,400	<b>0666 760 350</b>	
350*	25.4**	9	3.0	34		5,400	<b>0666 760 351</b>	

\* Max. circumferential speed 100 m/s.

\*\* With driver hole.

### Frequent applications (see table for additional applications)

