

ROTARY JOINTS



Connection 1	Connection 2	Flow rate in L/min.	Art. No.	P. Qty.
MT 1/4"	IT 1/4"	750	0699 261 4	1
MT 3/8"	IT 3/8"	1,350	0699 263 8	



for pneumatic tools

Great flexibility directly at the pneumatic devices makes handling easier.

Can be angled down at least 180°.

No kinking of connection hose.

Can be rotated through 360°.

Prevents twisting of the pneumatic hose.

Manometer can be connected to the rotary joint (accessory).

Operating pressure is displayed directly on the pneumatic tool.

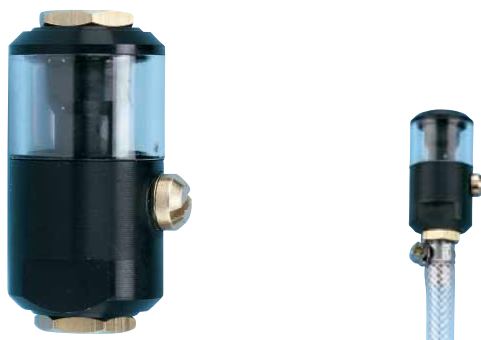
Accessories		
Designation	Art. No.	P. Qty.
Manometer for connection to rotary joint.	0699 261 401	1



Tip for pros!

Every connection leads to pressure losses. Therefore, a pneumatic system should only have as many connections as necessary. Insufficient operating pressure leads to decreased performance. For this reason, the active operating pressure should be measured directly at the pneumatic tool.

SMALL MIST OILER



- For pneumatic tools for direct connection to non-stationary devices with optimum metering.
- Operating pressure approx. 6 bar.
- Operating temperature +5°C to +50°C.
- Any desired flow direction.
- Insert vertically. Oil can run out if horizontal.

Connection	Tank content in cm ³	Weight in g	Art. No.	P. Qty.
1/4"	12	85	0699 070 314	1
3/8"			0699 070 338	

SPECIAL OIL



Contents in L	Art. No.	P. Qty.
1	0893 050 5	1

for pneumatic tools

- Excellent protection against corrosion and wear.
- For filling mist oilers in service units.
- Also effective at low temperatures.
- Contains no resin and acid.
- Silicone-free.

Oil Spray Can, Art. No. 0709 938 100