

SAFETY BITS

29-piece assortment



Art. No. 0614 250 30

P. Qty. 1

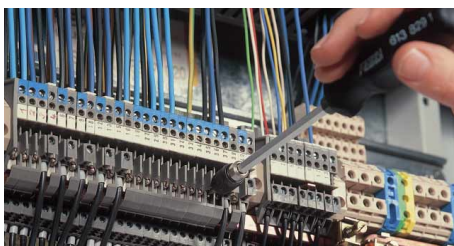
Anti-slip 2-component handle

This set contains all major bits required for installing and removing safety screws

Safety screws are used wherever unauthorized loosening must be prevented, e.g.:

- Electrical and electronics sector: Distribution boxes, switch boxes, chargers, air-conditioning units, household appliances, telephones etc.
- Machines: High-quality percussion drills, agitators, drill chucks etc.
- Motor vehicles and motorcycles: Airbag, ABS control units, ignition etc.
- Public facilities: Protective screens, guard rails, Plexiglas windows, bus stops, park benches, school furniture etc.

Designation	Drive	Tip	Art. No.	P. Qty.
Screwdriver with quick-change chuck and 1/4" bit holder	-	1/4"	0613 210 21	1
Adapter	1/4"	1/4"	0614 176 680	
	1/4"	1/4"	0614 176 700	
TX bit with inner hole	1/4"	TX 8	0614 352 608	
		TX 9	0614 352 609	
		TX 10	0614 352 610	
		TX 15	0614 352 615	
		TX 20	0614 352 620	
		TX 25	0614 352 625	
		TX 27	0614 352 627	
		TX 30	0614 352 630	
TX 40	0614 352 640			
Bit set, internal hexagon with hole		2, 2.5, 3, 4, 5, 6	0614 250 301	
Bit set, claw spanner		4, 6, 8, 10	0614 250 302	
Bit set, three-wing		1, 2, 3, 4	0614 250 303	
Bit set, Torq		6, 8, 10	0614 250 304	



e.g. fuse boxes