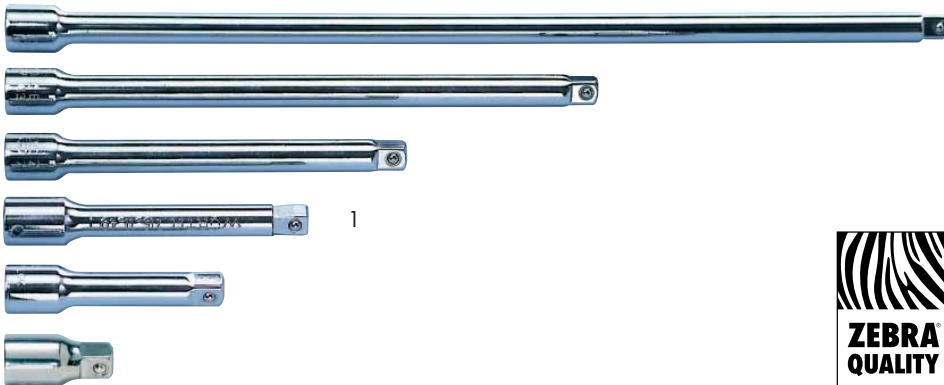
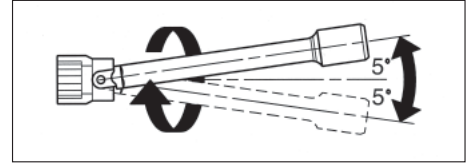


1/4" EXTENSIONS



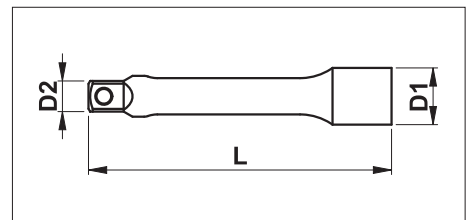
- Version: Chrome-plated, polished
- Drive: 1/4", ball catch groove



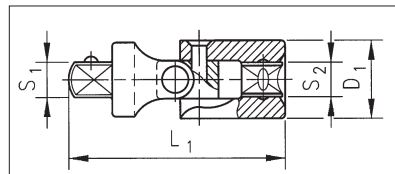
- ¹ Angled extension
- Use: Movement up to 5° possible: Aids work in hard-to-reach places



D1 in mm	D2 in mm	L in mm	L	Art. No.	P. Qty.
12	8.3	25	1"	0713 118 101	1/20
12	8.3	53	2"	0713 118 102	1/20
12	8.3	101	4"	0713 118 104	1/20
12	8.3	152	6"	0713 118 106	1/10
12	8.3	250	10"	0713 118 110	1/10
12	8.0	75	3"	0715 11 40¹	1



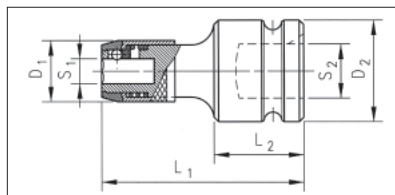
1/4" CARDAN JOINT



- Version: Chrome-plated, polished
- Drive: 1/4", ball catch groove
- Joint: Features spring brake
 - Remains in set position

S1	S2	D1 in mm	L1 in mm	Art. No.	P. Qty.
1/4"	1/4"	14	33	0713 118 301	1/20

1/4" ADAPTER WITH QUICK-CHANGE CHUCK



- Drive: Inner square DIN 3121 for use with ratchet or square drive
- Tip: Inner square 1/4", DIN 3126
- Use: Universal mounting of 1/4" bits

S1	S2	L1 in mm	L2 in mm	D1 in mm	D2 in mm	Art. No.	P. Qty.
1/4"	1/4"	30	11	13	14	0715 11 01	1