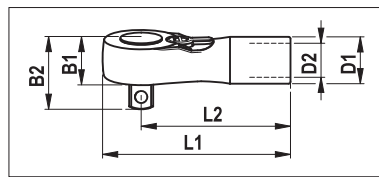


1" RATCHET HEAD



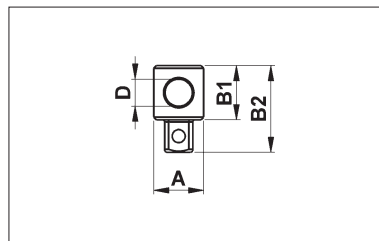
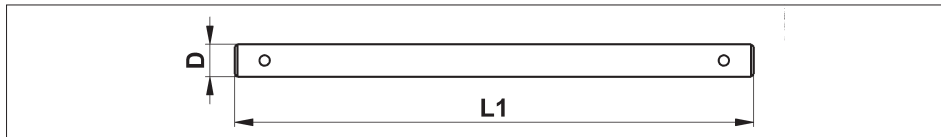
- Standard: DIN 3122, ISO 3315
- Head: 24 teeth, 15° rotating angle, reversible
- Square: with ball
- Design: chrome-plated, matt

| L1 in mm | L2 in mm | B1 in mm | B2 in mm | D1 in mm | D2 in mm | Art. No. | P. Qty. |
|----------|----------|----------|----------|----------|----------|------------|---------|
| 170 | 135 | 32 | 67 | 40 | 28 | 0714 110 0 | 1 |

Accessories:

Slider bar
Art. No. 0714 110 200

1" SLIDER BAR AND SLIDER PIECE



Slider bar¹⁾ with pin lock

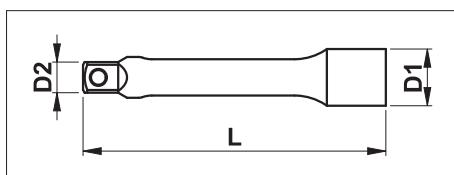
- Design: chrome-plated, matt
- Application: For use as ratchet handle and T-handle.

Slider piece²⁾ with pin lock

- Design: chrome-plated, matt
- Used as T-handle or L-handle with slider bar.

| L1 in mm | B1 in mm | B2 in mm | D in mm | A in mm | Art. No. | P. Qty. |
|----------|----------|----------|---------|---------|----------------------------|---------|
| 500 | - | - | 27.8 | - | 0714 110 200 ¹⁾ | 1 |
| - | 47 | 74.5 | 28 | 49.5 | 0714 110 201 ²⁾ | |

1" EXTENSIONS



- Standard: DIN 3123, ISO 3316
- Design: chrome-plated, matt
- Drive: 1", locking pin
- Tip: 1", locking pin

| D1 in mm | D2 in mm | L in mm | Art. No. | P. Qty. |
|----------|----------|---------|--------------|---------|
| 48 | 35 | 210 | 0714 158 108 | 1 |
| | | 410 | 0714 158 116 | |