

# 1/4" SOCKET WRENCH SET



Multi-functional spherical ratchet with adjustable handle and the most commonly used socket wrenches in a compact product range.

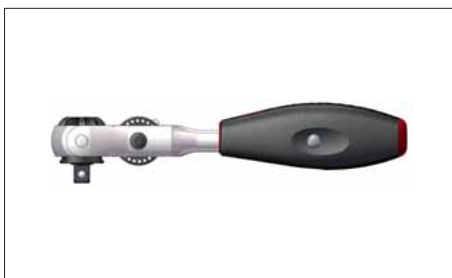
**3 in 1!**  
Can be used like a conventional ratchet, as a screwdriver or a T-handle

- Drive: 6.3 - 1/4"
- Standard: DIN 3122, ISO 3315
- Head: 72 teeth, angle of rotation: 5°, joint can be rotated 270°
- Handle: Two-component handle, straight or adjustable 90° as T-handle
- Contents: 27 pieces

**Art. No. 0965 014 27**

P. Qty.

Delivery scope:			
Designation	Length in mm	Art. No.	P. Qty.
Spherical Head Ratchet	145	<b>0712 014 05</b>	1
9 Socket Wrench Inserts: One each of 6; 7; 8; 9; 10; 11; 12; 13; 14	22	<b>0713 111 106–0713 111 114</b>	
14 Socket Wrench Insert Bits: PH 1; PH 2; PH 3	25	<b>0715 118 01–0715 118 03</b>	
Internal hex.: 4; 5; 6	25	<b>0715 115 03–06</b>	
TX: 10, 15, 20, 25, 27, 30, 40	25	<b>0715 113 10–40</b>	
Slotted: 1.0 x 5.5	25	<b>0715 117 55</b>	
Extensions	50; 150	<b>0715 118 102–106</b>	
Cardan Joint	33	<b>0713 118 301</b>	
Foam Insert	215 x 105 x 30	<b>0955 014 27</b>	
Metal Box, size 1	220 x 110 x 35	<b>0955 715 1</b>	



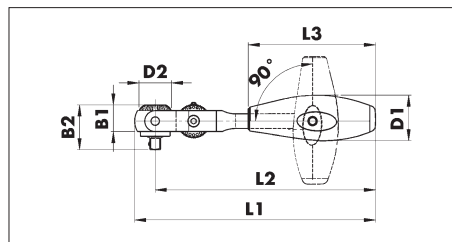
Can be used like a conventional ratchet with quick ejector or safety lock



Can be used like a screwdriver



Can be used with T-handle and swiveling ratchet head. Any desired angle can be set. Locked in place with rotary wheel.



L1	L2	L3	B1	B2	D1	D2	Art. No.	P. Qty.
145	130	77	18.5	26.5	26	20	<b>0712 014 05</b>	1
Maintenance Set							<b>0712 000 014</b>	