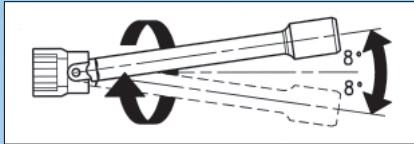
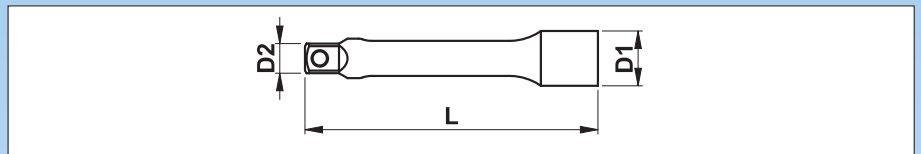
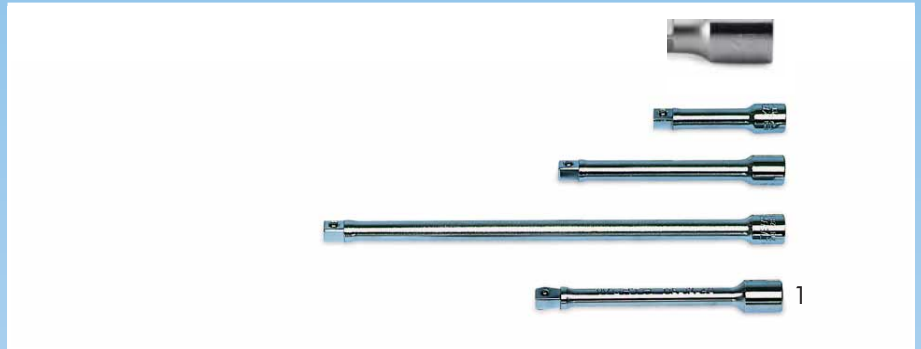


## 3/8" Extension Bars

Standard: DIN 3123, ISO 3316  
 Finish: chrome-plated  
 Input drive: 3/8", ball groove  
 Output drive: 3/8"



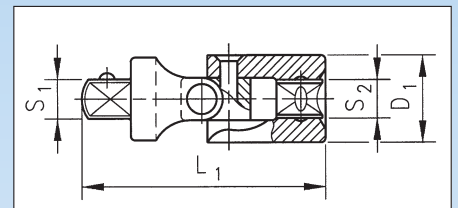
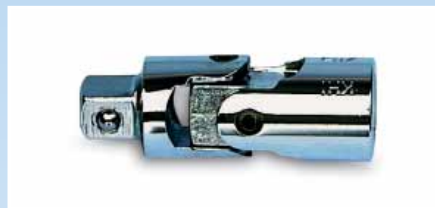
<sup>1</sup> Flex extension bar:  
 Swivelling angle up to 8°  
 → Permits working in tight spaces.



D1 mm	D2 mm	L mm	L	Art. No.	
17.5	12	38	1 1/2"	0713 128 101	1/10
17.5	12	75	3"	0713 128 103	
17.5	12	125	5"	0713 128 105	
17.5	12	250	10"	0713 128 110	
18	13	125	5"	0715 12 40 <sup>1</sup>	1

## 3/8" Universal Joint

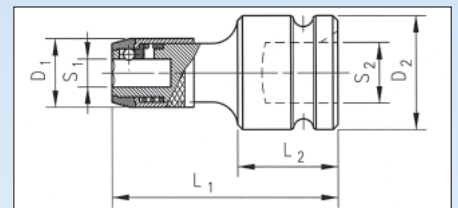
Standard: DIN 3123, ISO 3316  
 Finish: chrome-plated  
 Input drive: 3/8", ball groove  
 Output drive: 3/8"  
 Joint: spring-loaded:  
 → stays in set position



S1	S2	D1 mm	L1 mm	Art. No.	
3/8"	3/8"	17.5	55	0713 128 301	1/10

## 3/8" Adapter with Quick Action Chuck

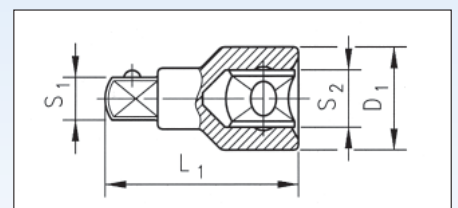
Input drive: square socket according to DIN 3121 for use with a ratchet or square drive  
 With hole for safety pin and O-ring groove  
 Output drive: hex socket 1/4", according to DIN 3126  
 Application: universal holder for 1/4" bits



S1	S2	L1 mm	L2 mm	D1 mm	D2 mm	Art. No.	
1/4"	3/8"	43	15	14	19	0715 12 01	1

## Connecting Piece

Standard: DIN 3123, ISO 3316  
 Finish: chrome-plated  
 Input drive: female square 3/8"  
 Output drive: male square 1/2" or 1/4"  
 Application: adapter for 1/4" or 1/2" socket bits



S1	S2	D1 mm	L1 mm	Art. No.	
1/4"	3/8"	17	27	0713 128 401	1/10
1/2"	3/8"	20	36	0713 128 402	