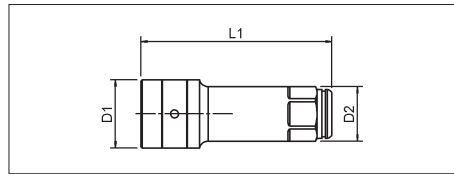


PASS-THROUGH WRENCH EXTENSION



POWERDRIV

Drive: Hexagon metric, 19 mm, POWERDRIV

Version: Chrome-plated, polished

Geometry: Features through-hole

L1 in mm	D1 in mm	D2 in mm	Art. No.	P. Qty.
75	26.5	19	0713 135 02	1

PASS-THROUGH WRENCH ADAPTER






Standards socket wrenches can also be used

Adapter for socket wrench or bits

Version: Chrome-plated, polished

Use: For reversible ratchet pass-through wrench with 19 mm mount

Item	Tip	Length in mm	Art. No.	P. Qty.
1	For 1/2" socket wrench 	39	0713 135 03	1
2	For 3/8" socket wrench 	32.5	0713 135 04	
3	For 1/4" hexagon bits 	30.5	0713 135 05	

Additional articles:
Reversible Ratchet
Pass-Through Wrench
Art. No. 0715 135 01