

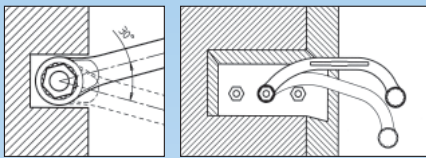
Double-Ring Spanner

Design: metric.
Obstruction wrench.

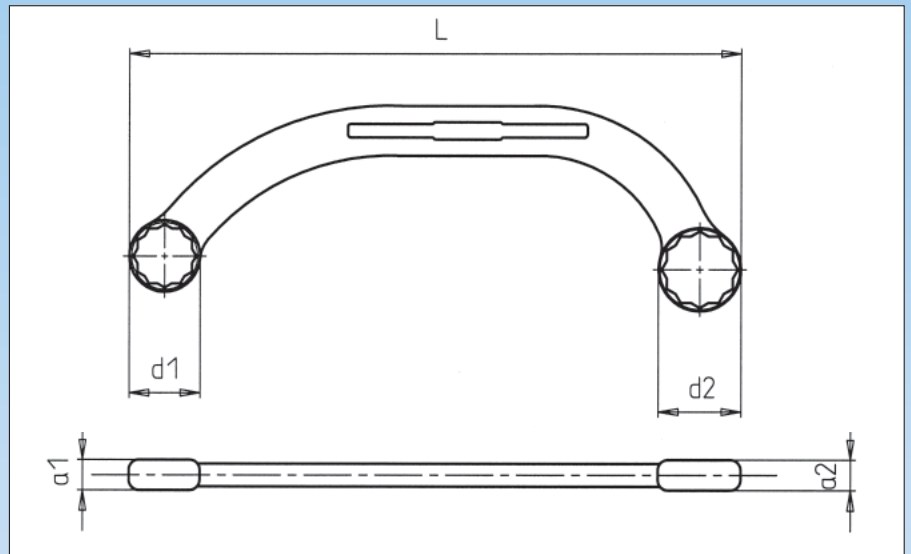
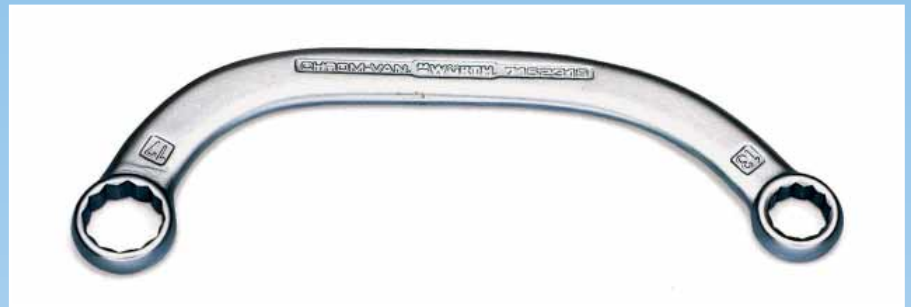
Drive: POWERDRIV® 12-point
Standard: ISO 3318.

Material: chrome-vanadium-steel.
Surface: polished, chrome-plated.

Geometry: half-moon shape, 30° rotating angle, thin-walled heads, countersunk on both sides.



The half-moon shape enables you to work on hard-to-reach nuts that cannot be reached with conventional tools. Work on engine block, starter and intake and exhaust manifolds.



in mm	L in mm	a ₁ in mm	a ₂ in mm	Dia. d ₁ in mm	Dia. d ₂ in mm	Art. No.	
11 x 13	150	7	7	7.5	19.5	0715 23 17	1
13 x 17	185	9	8.5	21.5	25	0715 23 19	
14 x 17	185	9	8.5	22.5	25	0715 23 20	
19 x 22	235	11.5	12	28.5	32	0715 23 21	

Double-Ring Spanner

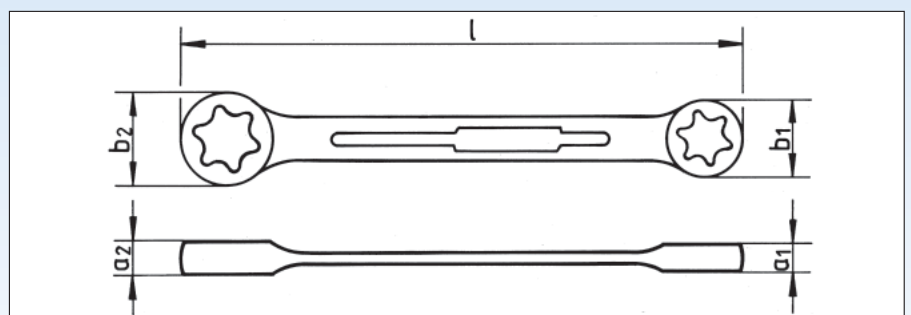
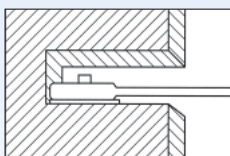
Design: Outer TX, straight.

Drive: TX profile.

Material: chrome-vanadium-steel.

Surface: heads are polished, chrome-plated.

Application: for outer TX bolts.



E	L in mm	a ₁ in mm	a ₂ in mm	Dia. b ₁ in mm	Dia. b ₂ in mm	Art. No.	
6 x 8	115	5	6	9	11	0714 226 8	1
10 x 12	144	7	8	13	15	0714 221 012	
14 x 18	179	9	12	17	21	0714 221 418	
20 x 24	226	12	14	24	28	0714 222 024	

Can be used in the tightest of spaces thanks to a short shaft and slim heads.