

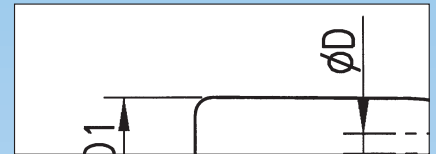


## File Handle

**Wood, DIN 395  
with roll round clamp**

- Beech wood.
- Glazed Handle.

L 1 mm	D 1 mm	D 2 mm	Ø D mm	Art. No.	
100	25	16	3	<b>0714 61 57</b>	1
110	28	28	4	<b>0714 61 58</b>	
120	31	20	5.5	<b>0714 61 59</b>	
130	33	20	7	<b>0714 61 60</b>	
140	35	22	9	<b>0714 61 61</b>	



## File Handle

- Sealed surface.
- Shape at the ball of the hand enables smooth and even filing.
- Fits wall in the hand of any user.  
→ Effortless working!

Length of file handle mm	Dia. of file handle mm	Dia. of bore mm	For file length mm	Art. No.	
110	28	3	150	<b>0714 61 620</b>	1
110	28	5	200	<b>0714 61 622</b>	
120	28	7	250/300/350	<b>0714 61 624</b>	



## Set of Workshop Files

**5 pieces**

- Forms:
  - flat-hand
  - half-round
  - round
  - triangular
  - square
- In plastic wallet.

**Art. No. 0714 61 90**

Form	L mm	S mm	B mm	Cut	
	200	5.5	21	2	1
	200	8.5	-	2	
	200	7.5	-	2	
	200	6	21	2	
	200	8	-	2	