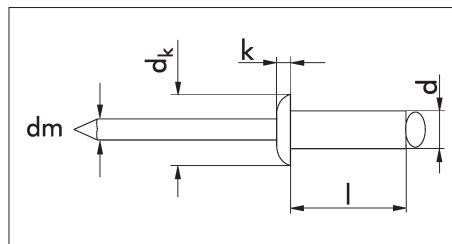


BLIND RIVETS

Round pan head



Sleeve: Stainless steel A2
Pin: Stainless steel A2

Standard riveting range

d x l mm	Drilled hole dia. mm	Clamping range mm	dk mm	k mm	dm mm	Shear fracture load N	Tensile fracture load N	Art. no.	PU Qty.
3.0 x 6	3.1	1.0-3.0	6.5	0.8	1.95	1600	2000	0931 930 6	500
3.0 x 8		3.0-5.0						0931 930 8	
3.0 x 10		5.0-7.0						0931 930 10	
3.0 x 12		7.0-9.0						0931 930 12	
3.2 x 6	3.3	1.0-3.0	6.5	0.8	1.95	1800	2500	0931 932 6	500
3.2 x 8		3.0-5.0						0931 932 8	
3.2 x 10		5.0-7.0						0931 932 10	
3.2 x 12		7.0-9.0						0931 932 12	
4.0 x 6	4.1	1.0-2.5	8.0	1.0	2.5	3100	3800	0931 940 6	100/ 500
4.0 x 8		2.5-4.5						0931 940 8	
4.0 x 10		4.5-6.5						0931 940 10	
4.0 x 12		6.5-8.5						0931 940 12	
4.0 x 14		8.5-10.5						0931 940 14	
4.0 x 16		10.5-12.0						0931 940 16	
4.0 x 18		12.0-14.0						0931 940 18	
4.0 x 20		14.0-16.0						0931 940 20	
4.8 x 8	4.9	1.5-4.0	9.5	1.1	2.9	4500	6000	0931 948 8	100/ 250
4.8 x 10		4.0-6.0						0931 948 10	
4.8 x 12		6.0-8.0						0931 948 12	
4.8 x 14		8.0-9.5						0931 948 14	
4.8 x 16		9.5-11.0						0931 948 16	
5.0 x 8	5.1	2.0-4.0	9.5	1.1	2.9	5000	6500	0931 950 8	100/ 250
5.0 x 10		4.0-6.0						0931 950 10	
5.0 x 12		6.0-8.0						0931 950 12	
5.0 x 14		8.0-10.0						0931 950 14	
5.0 x 16		10.0-12.0						0931 950 16	
6.4 x 10	6.5	2.0-4.0	13.0	1.8	3.85	6500	8850	0931 964 10	250
6.4 x 12		4.0-6.0						0931 964 12	
6.4 x 15		6.0-9.0						0931 964 15	
6.4 x 18		9.0-13.0						0931 964 18	

Can be stored in ORSY® system

