

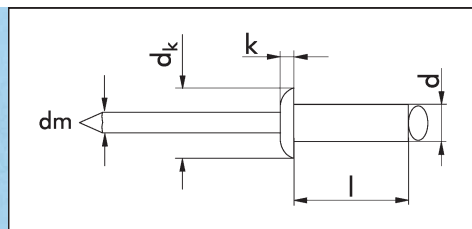
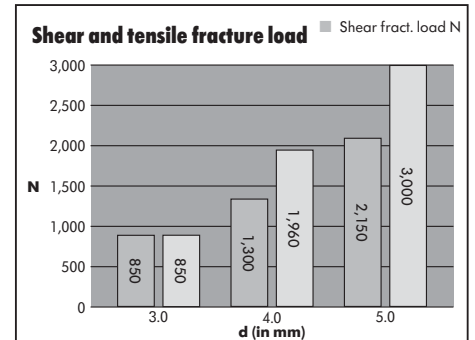
# Blind Rivets

## 120° countersunk head

Pin: Galvanized steel, blue passivated (A2K)

Standard riveting range

d x l in mm	Drill hole dia. in mm	Clamping range in mm	dk in mm	k in mm	dm in mm	Shear fract. load N	Tens. fract. load N	Art. No.	P. Qty.
3.0 x 6.0	3.1	1.5 – 3.5	6.0	0.9	1.8	850	850	<b>0938 3 6</b>	500
3.0 x 8.0	3.1	3.5 – 5.5						<b>0938 3 8</b>	500
3.0 x 10.0	3.1	5.5 – 7.0						<b>0938 3 10</b>	500
3.0 x 12.0	3.1	7.0 – 9.0						<b>0938 3 12</b>	500
4.0 x 6.0	4.1	1.5 – 3.0	7.5	1.0	2.2	1,300	1,960	<b>0938 4 6</b>	500
4.0 x 8.0	4.1	3.0 – 5.0						<b>0938 4 8</b>	500
4.0 x 10.0	4.1	5.0 – 6.5						<b>0938 4 10</b>	500
4.0 x 12.0	4.1	6.5 – 8.5						<b>0938 4 12</b>	500
4.0 x 16.0	4.1	10.5 – 12.5						<b>0938 4 16</b>	500
4.0 x 20.0	4.1	14.5 – 16.5						<b>0938 4 20</b>	500
5.0 x 8.0	5.1	3.0 – 4.5	9.0	1.2	2.25	2,150	3,000	<b>0938 5 8</b>	500
5.0 x 10.0	5.1	4.5 – 6.0						<b>0938 5 10</b>	500
5.0 x 12.0	5.1	6.0 – 8.0						<b>0938 5 12</b>	500
5.0 x 16.0	5.1	10.0 – 12.0						<b>0938 5 16</b>	500
5.0 x 20.0	5.1	14.0 – 16.0						<b>0938 5 20</b>	250
5.0 x 25.0	5.1	16.0 – 21.0						<b>0938 5 25</b>	250



# Blind Rivets

## Round pan head

Sleeve: Copper  
Pin: Galvanized steel, blue passivated (A2K)

d x l in mm	Drill hole dia. in mm	Clamping range in mm	dk in mm	k in mm	dm in mm	Shear fract. load N	Tens. fract. load N	Art. No.	P. Qty.
3.0 x 6.0	3.1	1.5 – 3.5	6.5	0.8	2.0	650	900	<b>0940 3 6</b>	500
3.0 x 8.0	3.1	3.5 – 5.5	6.5	0.8	2.0	650	900	<b>0940 3 8</b>	500
4.0 x 6.0	4.1	1.0 – 3.5	8.0	1.0	2.4	1,400	2,000	<b>0940 4 6</b>	500
4.0 x 8.0	4.1	3.5 – 4.5	8.0	1.0	2.4	1,400	2,000	<b>0940 4 8</b>	500
4.0 x 10.0	4.1	4.5 – 6.5	8.0	1.0	2.4	1,400	2,000	<b>0940 4 10</b>	500
4.0 x 12.0	4.1	6.5 – 8.5	8.0	1.0	2.4	1,400	2,000	<b>0940 4 12</b>	500

