

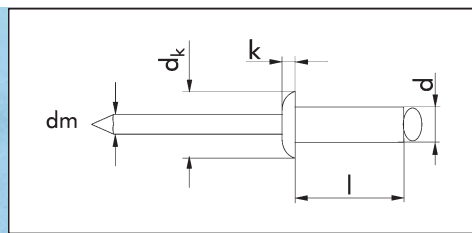
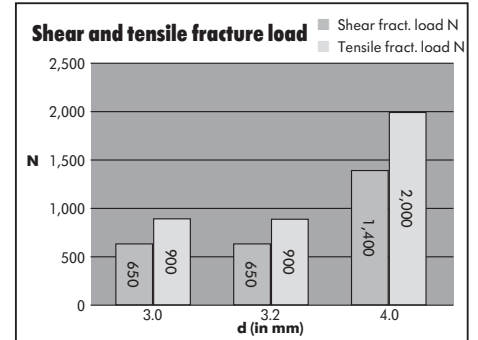
# Blind Rivets

## Round pan head

**Sleeve:** Bare copper  
**Pin:** Bare bronze

**Standard riveting range**

d x l in mm	Drill hole dia. in mm	Clamping range in mm	d <sub>k</sub> in mm	k in mm	dm app. in mm	Shear fract. load N	Tens. fract. load N	Art. No.	P. Qty.
3.0 x 5.0	3.1	0.5 – 2.5	6.5	0.8	1.8	650	900	<b>0941 3 5</b>	500
3.0 x 6.0	3.1	1.5 – 3.0						<b>0941 3 6</b>	500
3.0 x 8.0	3.1	3.0 – 5.0						<b>0941 3 8</b>	500
3.0 x 10.0	3.1	5.0 – 7.0						<b>0941 3 10</b>	500
3.2 x 6.0	3.3	1.5 – 3.0	6.5	0.8	2.0	650	900	<b>0941 32 6</b>	500
3.2 x 8.0	3.3	3.0 – 5.0						<b>0941 32 8</b>	500
3.2 x 10.0	3.3	5.0 – 7.0						<b>0941 32 10</b>	500
4.0 x 6.0	4.1	1.5 – 3.5	8.0	1.0	2.4	1,400	2,000	<b>0941 4 6</b>	500
4.0 x 8.0	4.1	3.5 – 4.5						<b>0941 4 8</b>	500
4.0 x 10.0	4.1	4.5 – 6.5						<b>0941 4 10</b>	500



# Blind Rivets

## Round pan head

**Sleeve:** Galvanized steel,  
blue passivated (A2K)  
**Pin:** Galvanized steel,  
blue passivated (A2K)

d x l in mm	Drill hole dia. in mm	Clamping range in mm	d <sub>k</sub> in mm	k in mm	dm app. in mm	Shear fract. load N	Tens. fract. load N	Art. No.	P. Qty.
3.0 x 6.0	3.1	0.5 – 3.0	6.5	0.8	2.0	1,100	1,500	<b>0935 3 6</b>	500
3.0 x 8.0	3.1	3.0 – 5.0	6.5	0.8	2.0	1,100	1,500	<b>0935 3 8</b>	500
3.0 x 10.0	3.1	5.0 – 7.0	6.5	0.8	2.0	1,100	1,500	<b>0935 3 10</b>	500
3.2 x 6.0	3.3	0.5 – 3.5	6.5	0.8	2.0	1,400	1,700	<b>0935 32 6</b>	500
3.2 x 8.0	3.3	3.5 – 5.0	6.5	0.8	2.0	1,400	1,700	<b>0935 32 8</b>	500
3.2 x 10.0	3.3	5.0 – 7.0	6.5	0.8	2.0	1,400	1,700	<b>0935 32 10</b>	500
3.2 x 12.0	3.3	7.0 – 9.0	6.5	0.8	2.0	1,400	1,700	<b>0935 32 12</b>	500
4.0 x 6.0	4.1	0.5 – 2.5	8.0	1.0	2.4	2,000	2,400	<b>0935 4 6</b>	500
4.0 x 8.0	4.1	2.5 – 4.5	8.0	1.0	2.4	2,000	2,400	<b>0935 4 8</b>	500
4.0 x 10.0	4.1	4.5 – 6.5	8.0	1.0	2.4	2,000	2,400	<b>0935 4 10</b>	500
4.0 x 12.0	4.1	6.5 – 8.5	8.0	1.0	2.4	2,000	2,400	<b>0935 4 12</b>	500
4.0 x 16.0	4.1	8.5 – 12.5	8.0	1.0	2.4	2,000	2,400	<b>0935 4 16</b>	500
4.0 x 20.0	4.1	12.5 – 15.0	8.0	1.0	2.4	2,000	2,400	<b>0935 4 20</b>	500
5.0 x 8.0	5.1	2.0 – 4.0	9.5	1.1	2.9	3,500	4,800	<b>0935 5 8</b>	500
5.0 x 10.0	5.1	4.0 – 6.0	9.5	1.1	2.9	3,500	4,800	<b>0935 5 10</b>	500
5.0 x 12.0	5.1	6.0 – 8.0	9.5	1.1	2.9	3,500	4,800	<b>0935 5 12</b>	500
5.0 x 16.0	5.1	8.0 – 11.0	9.5	1.1	2.9	3,500	4,800	<b>0935 5 16</b>	500
5.0 x 20.0	5.1	11.0 – 15.0	9.5	1.1	2.9	3,500	4,800	<b>0935 5 20</b>	250
5.0 x 30.0	5.1	20.0 – 25.0	9.5	1.1	2.9	3,500	4,800	<b>0935 5 30</b>	100
6.0 x 10.0	6.1	2.5 – 4.5	12.0	1.5	3.6	4,200	5,500	<b>0935 6 10</b>	250
6.0 x 12.0	6.1	4.5 – 6.5	12.0	1.5	3.6	4,200	5,500	<b>0935 6 12</b>	250
6.0 x 14.0	6.1	6.5 – 9.5	12.0	1.5	3.6	4,200	5,500	<b>0935 6 14</b>	250
6.0 x 18.0	6.1	9.5 – 12.5	12.0	1.5	3.6	4,200	5,500	<b>0935 6 18</b>	250
6.0 x 21.0	6.1	12.5 – 15.5	12.0	1.5	3.6	4,200	5,500	<b>0935 6 21</b>	250
6.4 x 12.0	6.5	4.0 – 7.5	13	1.8	3.9	4,900	7,000	<b>0935 64 12</b>	250

