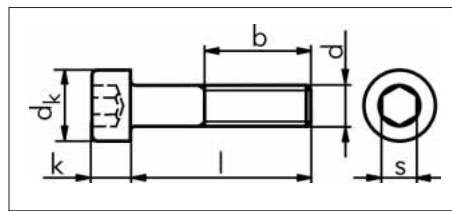


# CHEESE-HEAD SCREWS WITH ALLEN HEAD

ISO 4762

Replaces DIN 912



"DIN 912 was withdrawn and replaced by the international standard ISO 4762".  
The diameters M1,4, M18, M22, M27, M33, M72, M80, M 90, M100 and the nominal length 2 mm are not included in ISO 4762.

Nominal dia. d	M2	M2.5	M3	M4	M5	M6	M8	M10	M12
dk max.	3.98	4.68	5.68	7.22	8.72	10.22	13.00	16.27	18.27
k max.	2.00	2.50	3.00	4.00	5.00	6.00	8.27	10.00	12.00
b* (aux. dim.)	16.00	17.00	18.00	20.00	22.00	24.00	28.00	32.00	36.00
s nom.	1.50	2.00	2.50	3.00	4.00	5.00	6.00	8.00	10.00

These diameters and lengths are therefore still available under the designation DIN 912.

Steel 12.9, bare

Nominal dia. d	M14	M16	M18	M20	M24	M27	M30	M36	M42
dk max.	21.33	24.33	27.33	30.33	36.39	40.39	45.39	54.46	63.46
k max.	14.00	16.00	18.00	20.00	24.00	27.00	30.00	36.00	42.00
b* (aux. dim.)	40.00	44.00	48.00	52.00	60.00	66.00	72.00	84.00	96.00
s nom.	12.00	14.00	14.00	17.00	19.00	19.00	22.00	27.00	32.00

\* Some of the short dimensions have the thread up to the head, see ISO 4762 and DIN 912

Nominal dia. d	Length l in mm	Steel 12.9, bare Art. No.	P. qty.
M 2	3	<b>0083 2 3</b>	1000
	4	<b>0083 2 4</b>	1000
	5	<b>0083 2 5</b>	1000
	6	<b>0083 2 6</b>	1000
	8	<b>0083 2 8</b>	500
	10	<b>0083 2 10</b>	1000
	12	<b>0083 2 12</b>	1000
	14	<b>0083 2 14</b>	1000
	16	<b>0083 2 16</b>	1000
M 2.5	3	<b>0083 25 3</b>	1000
	4	<b>0083 25 4</b>	1000
	5	<b>0083 25 5</b>	1000
	6	<b>0083 25 6</b>	500
	8	<b>0083 25 8</b>	500/2000
	10	<b>0083 25 10</b>	1000
	12	<b>0083 25 12</b>	1000
	16	<b>0083 25 16</b>	500
	20	<b>0083 25 20</b>	500
M 3	3	<b>0083 25 25</b>	500
	4	<b>0083 25 30</b>	500
	4	<b>0083 3 4</b>	500
	5	<b>0083 3 5</b>	1000
	6	<b>0083 3 6</b>	200
	8	<b>0083 3 8</b>	200
	10	<b>0083 3 10</b>	200
	12	<b>0083 3 12</b>	200
	14	<b>0083 3 14</b>	500
	16	<b>0083 3 16</b>	200
	18	<b>0083 3 18</b>	500
	20	<b>0083 3 20</b>	200
	22	<b>0083 3 22</b>	500
	25	<b>0083 3 25</b>	200
	30	<b>0083 3 30</b>	200
M 4	35	<b>0083 3 35</b>	500
	40	<b>0083 3 40</b>	200
	45	<b>0083 3 45</b>	500
	50	<b>0083 3 50</b>	500
	55	<b>0083 3 55</b>	500
	5	<b>0083 4 5</b>	500
	6	<b>0083 4 6</b>	200
	8	<b>0083 4 8</b>	100
10	<b>0083 4 10</b>	100	
12	<b>0083 4 12</b>	100	

Nominal dia. d	Length l in mm	Steel 12.9, bare Art. No.	P. qty.
M 4	14	<b>0083 4 14</b>	100
	16	<b>0083 4 16</b>	100
	18	<b>0083 4 18</b>	500
	20	<b>0083 4 20</b>	100
	22	<b>0083 4 22</b>	500
	25	<b>0083 4 25</b>	100
	30	<b>0083 4 30</b>	100
	35	<b>0083 4 35</b>	100
	40	<b>0083 4 40</b>	100
	45	<b>0083 4 45</b>	100
	50	<b>0083 4 50</b>	100
	55	<b>0083 4 55</b>	500
	60	<b>0083 4 60</b>	200
	65	<b>0083 4 65</b>	200
	70	<b>0083 4 70</b>	500
	75	<b>0083 4 75</b>	200
	80	<b>0083 4 80</b>	200
	M 5	85	<b>0083 4 85</b>
90		<b>0083 4 90</b>	200
95		<b>0083 4 95</b>	50
100		<b>0083 4 100</b>	200
110		<b>0083 4 110</b>	100
120		<b>0083 4 120</b>	200
6		<b>0083 5 6</b>	500
8		<b>0083 5 8</b>	100
10		<b>0083 5 10</b>	100
12		<b>0083 5 12</b>	100
14		<b>0083 5 14</b>	500
16		<b>0083 5 16</b>	100
18		<b>0083 5 18</b>	500
20		<b>0083 5 20</b>	100
22		<b>0083 5 22</b>	500
25		<b>0083 5 25</b>	100
30		<b>0083 5 30</b>	100
35		<b>0083 5 35</b>	100
40	<b>0083 5 40</b>	100	
45	<b>0083 5 45</b>	100	
50	<b>0083 5 50</b>	100	
55	<b>0083 5 55</b>	100	
60	<b>0083 5 60</b>	100	
65	<b>0083 5 65</b>	100	
70	<b>0083 5 70</b>	100	
75	<b>0083 5 75</b>	200	
80	<b>0083 5 80</b>	100	