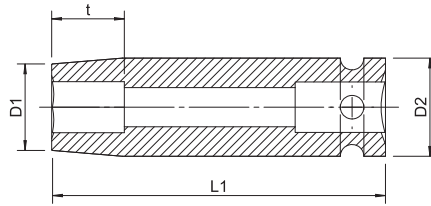


1/2-INCH IMPACT SOCKET WRENCH INSERT



Hexagon, metric, long

- Fits all conventional compressed air and electric drivers
- Standard: Square drive acc. to DIN 3121
- Design: forged, burnished

Drive	1/2 inch
Length (L1)	78 mm

Width across flats	Socket wrench external diameter (D1)	Socket wrench external diameter 2 (D2)	Socket wrench depth (t)	Art. No.	P. Qty.
8 mm	15 mm	25 mm	4 mm	0714 13 125	1
10 mm	17.5 mm	25 mm	5 mm	0714 13 127	1
11 mm	18.5 mm	25 mm	6 mm	0714 13 128	1
13 mm	20.5 mm	25 mm	6 mm	0714 13 13	1
14 mm	22 mm	25 mm	8 mm	0714 13 130	1
16 mm	24 mm	30 mm	8 mm	0714 13 131	1
17 mm	25 mm	30 mm	8 mm	0714 13 14	1
18 mm	26 mm	30 mm	9 mm	0714 13 142	1
19 mm	27 mm	30 mm	9 mm	0714 13 15	1
21 mm	30 mm	30 mm	10 mm	0714 13 151	1
22 mm	32 mm	30 mm	10 mm	0714 13 16	1
23 mm	34 mm	30 mm	12 mm	0714 13 161	1
24 mm	34 mm	30 mm	12 mm	0714 13 17	1
27 mm	38 mm	30 mm	13 mm	0714 13 18	1
30 mm	42 mm	30 mm	15 mm	0714 13 194	1

1/2-INCH IMPACT SOCKET WRENCH ASSORTMENT



12 pieces. Hexagon, metric, long.

- Fits all conventional compressed air and electric drivers

Art. No.	0714 900 200
P. Qty.	1
Number of pieces in assortment/set	12 PCS

Contents for Art. No.	Designation	Art. No.	Number
0714 900 200	1/2-inch impact socket wrench insert 10 mm	0714 13 127	1
	1/2-inch impact socket wrench insert 11 mm	0714 13 128	1
	1/2-inch impact socket wrench insert 13 mm	0714 13 13	1
	1/2-inch impact socket wrench insert 14 mm	0714 13 130	1
	1/2-inch impact socket wrench insert 17 mm	0714 13 14	1
	1/2-inch impact socket wrench insert 19 mm	0714 13 15	1
	1/2-inch impact socket wrench insert 21 mm	0714 13 151	1
	1/2-inch impact socket wrench insert 22 mm	0714 13 16	1
	1/2-inch impact socket wrench insert 23 mm	0714 13 161	1
	1/2-inch impact socket wrench insert 24 mm	0714 13 17	1
	1/2 inch power extension 150 mm	0714 13 23	1
	1/2 inch power cardan joint	0714 138 351	1