



# ALL-ROUNDER INJECTABLE MORTAR

## WIT-VM 250

Art.-no. 0903450201

### Specification

The all-rounder for concrete, masonry and post-installed rebar connections

**The all-rounder for concrete, masonry and post-installed rebar connections**

**Two-part reactive resin mortar, styrene-free vinylester**

**Individual fixing point, cracked and uncracked concrete, seismic performance category C1**

Anchor rod W-VI-A, anchor rod W-VD-A, standard threaded rod with acceptance test certificate 3.1

**Masonry individual fixing point (system with perforated sleeve WIT-SH):**

Perforated sleeve WIT-SH, anchor rod WIT-AS, internally threaded sleeve WIT-IG

**Masonry individual fixing point (system with perforated sleeve SH):**

Perforated sleeve SH, anchor rod W-VI-A, standard threaded rod with acceptance certificate 3.1

**Post-installed rebar connection**

**A 330 ml and 420 ml cartridge can continue to be used until the best before date, by changing the static mixer or resealing it with the end cap**

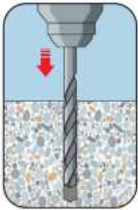
#### Proof of Performance

- European Technical Assessment ETA-12/0164: Individual fixing point + cracked and uncracked concrete (anchor rod W-VD-A, standard threaded rod with acceptance test certificate 3.1), seismic performance category C1
- European Technical Assessment ETA-13/1040: Individual fixing point + masonry consisting of solid and perforated brick, aerated concrete (perforated sleeve WIT-SH, anchor rod WIT-AS, internally threaded sleeve WIT-IG, aerated concrete only with perforated sleeve WIT-SH 18x95)
- European Technical Assessment ETA-16/0757 and ETA-20/0854: Individual fixing point + masonry consisting of solid and perforated brick, aerated concrete (perforated sleeve SH, anchor rod W-VI-A, internally threaded sleeve, threaded rod with acceptance test certificate 3.1, aerated concrete only without perforated sleeve)
- European Technical Assessment ETA-12/0166: Post-installed rebar connection, 330 ml, 420 ml, 825 ml cartridges only

## Application area



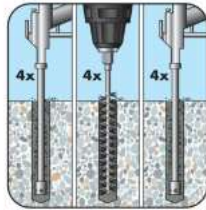
Awnings



Create the drill hole



Steel supports

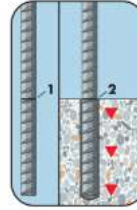


Clean the drill hole:

4x blow-out/4x mechanical brush-out/4x blow-out, effective anchorage depth > 240 mm drill hole with oil-free compressed air, min. 6 bar blow-out pressure



Brackets



Place the embedment depth mark on the rod and check the drilling hole depth



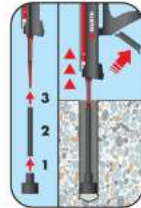
French balconies



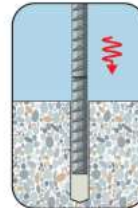
Screw mixer onto cartridge



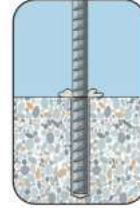
Discard the first section of mortar (until the mortar is uniformly coloured - approx. 10 cm)



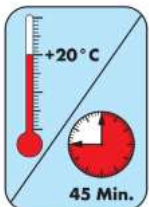
Mount injection equipment, fill injection mortar from bottom of drill hole



Insert the reinforcement bar until it reaches the mark, turning slightly



Visual check of the mortar volume, observe maximum processing time

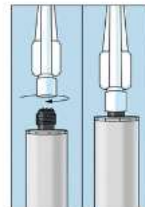


Load can be applied to the reinforcement bar after observing the curing time



Tubular film cartridge, 300 ml:

Cut tubular film clip before use! First section of mortar approx. 20 cm



Tubular film cartridge, 300 ml:

Cut tubular film clip before use! First section of mortar approx. 20 cm

- European Technical Assessment ETA-12/0164: Individual fixing point + cracked and uncracked concrete (anchor rod W-VD-A, standard threaded rod with acceptance test certificate 3.1), seismic performance category C1
- European Technical Assessment ETA-13/1040: Individual fixing point + masonry consisting of solid and perforated brick, aerated concrete (perforated sleeve WIT-SH, anchor rod WIT-AS, internally threaded sleeve WIT-IG, aerated concrete only with perforated sleeve WIT-SH 18x95)
- European Technical Assessment ETA-16/0757 and ETA-20/0854: Individual fixing point + masonry consisting of solid and perforated brick, aerated concrete (perforated sleeve SH, anchor rod W-VI-A, internally threaded sleeve, threaded rod with acceptance test certificate 3.1, aerated concrete only without perforated sleeve)
- European Technical Assessment ETA-12/0166: Post-installed rebar connection, 330 ml, 420 ml, 825 ml cartridges only

## Application

### Application area

- Anchoring in cracked and uncracked concrete, masonry consisting of solid and perforated brick, aerated concrete and for post-installed reinforcement rods.
- Suitable for attaching metal structures, metal profiles, wooden structures, brackets, grids, pipes, cable conduits etc.

## Technical information

Type description	WIT-VM 250
Contents	300 ml
Included in delivery	Mortar cartridge 300 ml (tubular film) + 1 x mixer nozzle
Suitable application gun	Battery-powered application gun 330ml Application gun WIT 330ml Application gun MULTI Silicone application gun 310ml
Min./max. processing temperature /conditions	-10 to 40 °C / temperature in the anchorage ground during processing and hardening
Min./max. ambient temperature / Conditions	-40 to 120 °C / after completely curing process
Temperature resistance, long-term temperatures max.	72 °C
Temperature resistance, short-term temperatures max.	120 °C
Shelf life from production/conditions	12 Month / cool and dry storage area, 5°C to 25°C

Approval	ETA-12/0164 ETA-13/1040 ETA-16/0757 ETA-20/0854
Chemical basis	Vinylester, styrene free
Colour	Grey